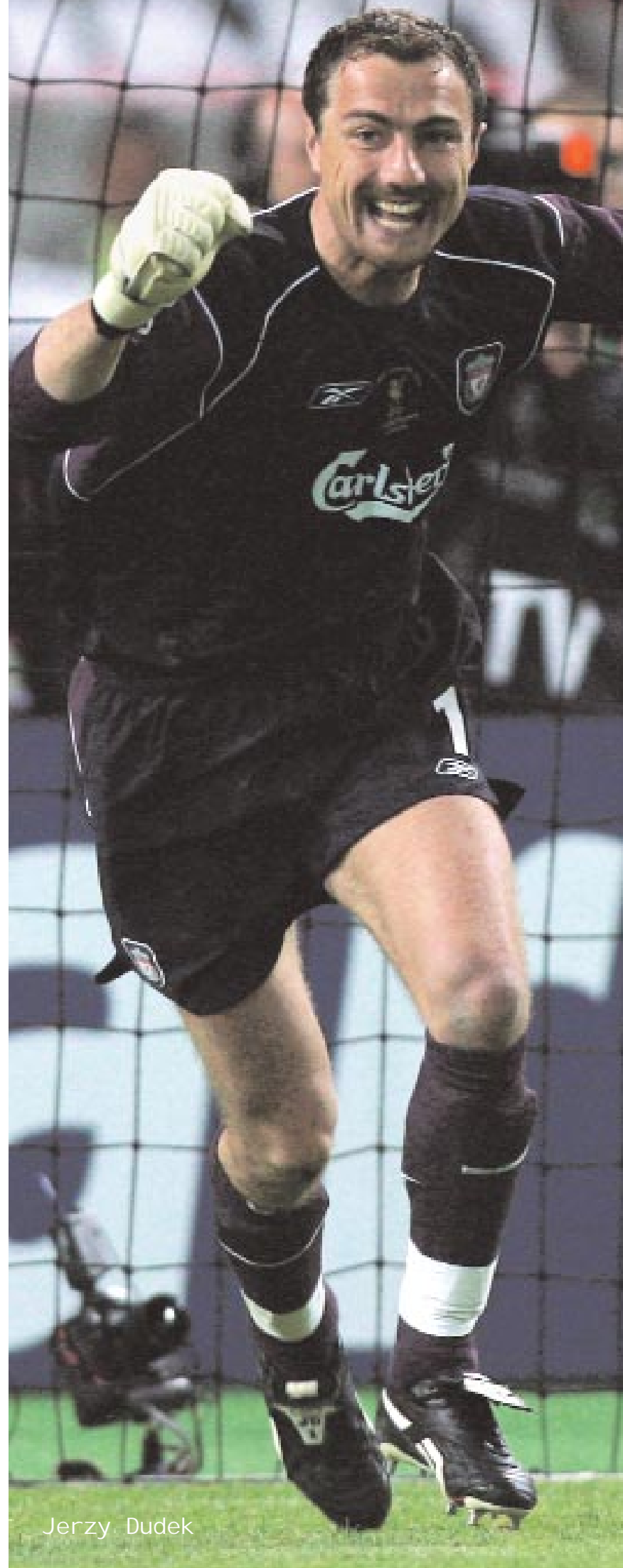


Reebok Team Customer Service
1. 888. 405. TEAM
(1. 888. 405. 8326)



www.reebok.com
Reebok International Ltd. 1895 J.W. Foster Boulevard
Canton, MA 02021 1. 781. 401. 5000



Jerzy Dudek



Jay-Jay Okocha

soccer specialty
spring/summer 2006

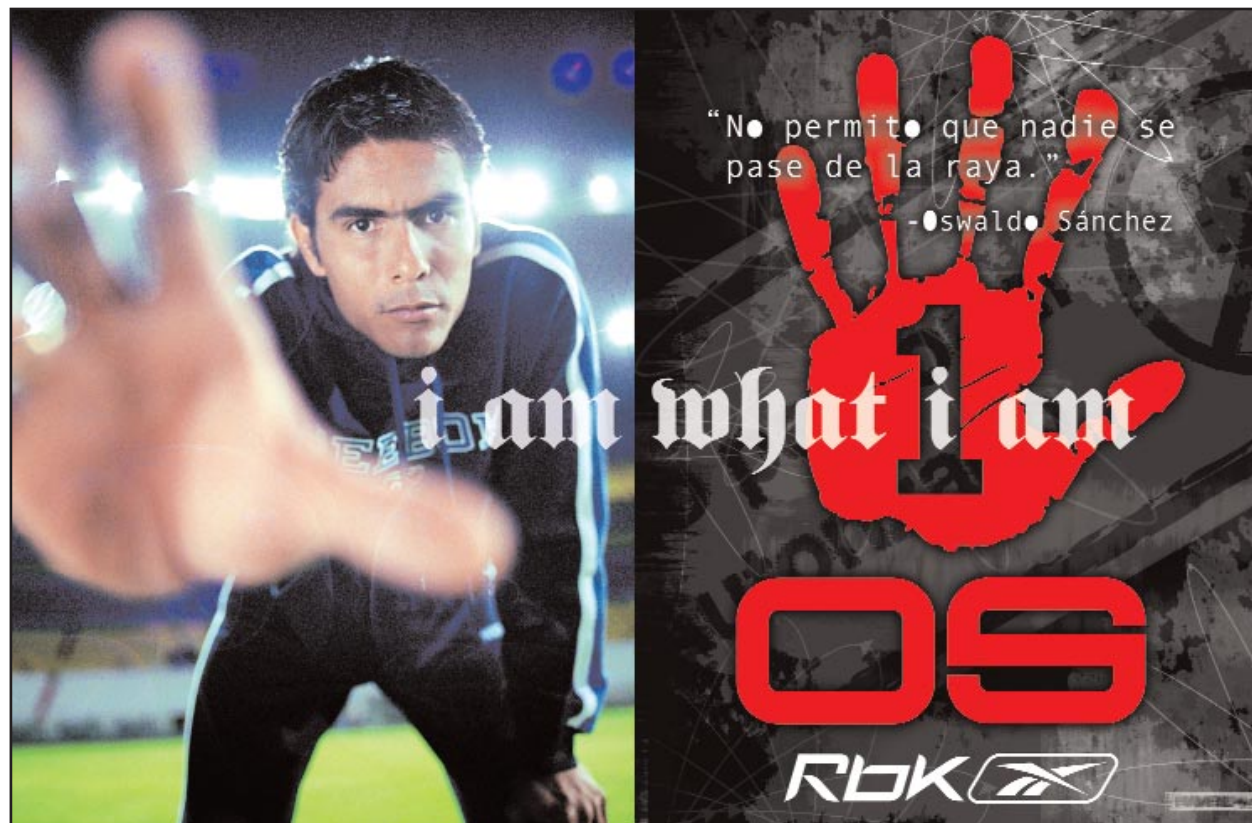




Events and Marketing



We are the team with the greatest comeback in UEFA history.
Liverpool - 2005 UEFA Champions



Oswaldo Sanchez featured in the "I Am What I Am" Brand campaign.

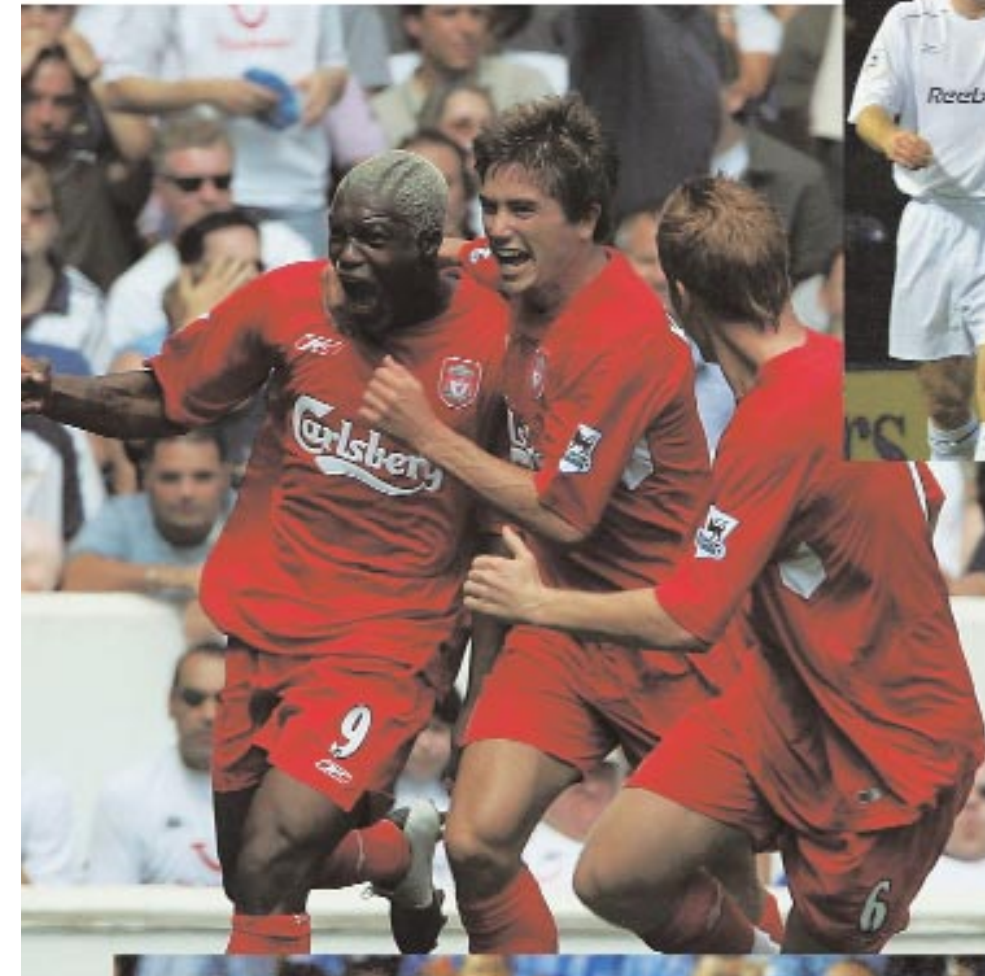


We are the company with the most teams
in the Premier League.

Bol ton Wanderers



Li verpool Footbal l Cl ub



Manchester Ci ty



West Ham Uni ted

Integrity Campana FG boot classic NEW

Feature	Consumer Benefit
Kangaroo leather upper and tongue	Excellent ball feel, lightweight and durable
Molded EVA sockliner with Poron® inserts in heel and forefoot	Comfort and cushioning
TPU bladed stud configuration	Great comfort, traction and ball control on firm ground
Made In Europe	Soccer craftsmanship
Men's Sizes: 3 - 12, 13 a. 141913 black/white/silver	
Intro Date: 1/2006 R0506	
Suggested Retail \$109.99	



Integrity Pro II RS boot classic NEW

Feature	Consumer Benefit
Kangaroo leather upper and tongue	Excellent ball feel, lightweight and durable
Molded EVA sockliner with Poron® inserts in heel and forefoot	Comfort and cushioning
TPU plate with removable cleats	Excellent traction and ball control on soft ground
Made In Europe	Soccer craftsmanship
Men's Sizes: 6.5 - 12, 13 a. 140383 black/white	
Intro Date: 1/2006 R0506	
Suggested Retail \$109.99	



Match Ready MS boot classic NEW

Feature	Consumer Benefit
Full-grain leather vamp/toe	Ball touch and comfort
Traditional foldover tongue	Professional styling
Polyurethane multi-stud outsole	Traction on firm ground
Men's Sizes: 3 - 12, 13 a. 151931 black/silver/citron b. 151926 black/silver c. 151925 white/royal/silver	
Intro Date: 1/2006 R0572	
Suggested Retail \$49.99	



Match Ready Sala boot classic NEW

Feature	Consumer Benefit
Full-grain leather vamp/toe	Ball touch and comfort
Traditional foldover tongue	Professional styling
Full length low profile EVA midsole	Cushioning, low-to-ground soccer feel
Gum rubber outsole	Low profile traction for indoor surfaces
Men's Sizes: 6.5 - 12, 13 a. 144328 black/silver/citron b. 144320 black/silver c. 144321 white/royal/silver	
Intro Date: 1/2006 R5203	
Suggested Retail \$54.99	



Notes

Pedinare II MS boot classic

Feature	Consumer Benefit
Soft synthetic upper	Ball feel, comfort and performance
Traditional foldover tongue	Professional styling
Polyurethane multi-stud outsole	Traction on firm ground
Made In Europe	Soccer craftsmanship
Men's Sizes: 3 - 12, 13 a. 138517 citron/royal/silver b. 138518 silver/navy/white c. 117629 gunmetal/black/silver d. 112354 pearl white/navy/citron	
R0022	
Suggested Retail \$39.99	



Campio SQ TPU boot classic NEW

Feature	Consumer Benefit
Soft synthetic upper	Ball feel, comfort and performance, lightweight and durable
Traditional foldover tongue	Professional styling
Padded foam sockliner	Comfort and cushioning
Polyurethane multi-stud outsole	Traction on hard ground
Men's Sizes: 6.5 - 12, 13 a. 141455 black/white/silver b. 144154 black/silver c. 147459 gunmetal/navy/white	
Intro Date: 1/2006 R5291	
Suggested Retail \$34.99	



Campio SQ Turf boot classic NEW

Feature	Consumer Benefit
Soft synthetic upper	Ball feel, comfort and performance, lightweight and durable
Traditional foldover tongue	Professional styling
Padded foam sockliner	Comfort and cushioning
Rubber outsole with multi-stud configuration	Comfort and traction on hard ground
Men's Sizes: 6.5 - 12, 13 a. 147467 black/white/silver	
Intro Date: 1/2006 R5291	
Suggested Retail \$34.99	



StrikeZone Pro FG strikezone	
Feature	Consumer Benefit
K-leather or microfiber vamp	Ball touch and durability
Unique StrikeZone Bootie construction	Eliminates layers for pure, snug fit, shoe reaction and feel
Air Mesh and Stretch Span	Socklike fit, laceless feel
Bootie materials	
Covered StrikeZone lacing	Clean laceless ball strike
External TPU heel counter	Stability
Molded sockliner with PU inserts in heel and forefoot	Stud dispersion and comfort in key footstrike zones
Launch Control TPU blade stud outsole	Comfort, stud dispersion and traction on firm/hard surfaces
Longer medial side forefoot studs	Increased traction for fast direction changes
Men's Sizes: 3 - 12, 13 a. 136895 black/silver/yellow - K-leather b. 132371 silver/red/black c. 132374 pearl white/royal/silver	
R0066	
Suggested Retail \$119.99	



StrikeZone Pro MS strikezone	
Feature	Consumer Benefit
K-leather vamp	Ball touch and durability
Unique StrikeZone Bootie construction	Eliminates layers for pure, snug fit, shoe reaction and feel
Air Mesh and Stretch Span	Socklike fit, laceless feel
Bootie materials	
Covered StrikeZone lacing	Clean laceless ball strike
External TPU heel counter	Stability
Molded sockliner with PU inserts in heel and forefoot	Stud dispersion and comfort in key footstrike zones
Men's Sizes: 3 - 12, 13 a. 136900 black/silver/yellow - K-leather	
R0066	
Suggested Retail \$119.99	



StrikeZone Pro RS strikezone	
Feature	Consumer Benefit
K-leather vamp	Ball touch and durability
Unique StrikeZone Bootie construction	Eliminates layers for pure, snug fit, shoe reaction and feel
Air Mesh and Stretch Span	Socklike fit, laceless feel
Bootie materials	
Covered StrikeZone lacing	Clean laceless ball strike
Molded sockliner with PU inserts in heel and forefoot	Stud dispersion and comfort in key footstrike zones
External TPU heel counter	Stability
Injected TPU 6 stud removable outsole	6 stud aluminum tipped traction for soft grounds
Men's Sizes: 6.5 - 12, 13 a. 136903 black/silver/yellow - K-leather	
R0066	
Suggested Retail \$119.99	



StrikeZone TD EVO 15 strikezone	
Feature	Consumer Benefit
Soft synthetic upper	Ball touch, comfort and performance
Unique StrikeZone Bootie construction (men only)	Eliminates layers for pure, snug fit, shoe reaction and feel
Mesh and Stretch Span Bootie	Socklike fit, laceless feel
Covered StrikeZone lacing	Clean laceless ball strike
Molded sockliner (men)	Comfort, cushioning and durability
EVA sockliner (junior)	Comfort, cushioning and durability
EVO 15 bladed outsole	Traction, easy ground interface on firm surfaces
Men's Sizes: 6.5 - 12, 13 Junior Sizes: 1 - 6 men junior a. 136908 136917 black/silver/yellow b. 132381 132361 silver/red/black c. 132382 132362 white/royal/silver	
R0572, R0022	
Suggested Retail \$49.99, \$44.99	



StrikeZone TD MS strikezone	
Feature	Consumer Benefit
Soft synthetic upper	Ball feel, comfort and performance
Unique StrikeZone Bootie construction	Eliminates layers for pure, snug fit, shoe reaction and feel
Mesh and Stretch Span	Socklike fit, laceless feel
Bootie materials	
Covered StrikeZone lacing	Clean laceless ball strike
Molded sockliner	Comfort, cushioning and durability
Men's Sizes: 3 - 12, 13 a. 136906 black/silver/yellow	
R2503	
Suggested Retail \$54.99	



StrikeZone Turf strikezone	
Feature	Consumer Benefit
Soft synthetic upper	Ball feel, comfort, and performance
Unique StrikeZone Bootie construction	Eliminates layers for pure, snug fit, shoe reaction and feel
Mesh and stretch span bootie materials	Socklike fit, laceless feel
Covered StrikeZone lacing	Clean laceless ball strike
Full length EVA midsole	Comfort and cushioning
Rubber combo MS and blade stud traction outsole	Traction on all hard and artificial surfaces
Men's Sizes: 6.5 - 12, 13 a. 136913 black/silver/yellow b. 132390 silver/red/black c. 132391 white/royal/silver	
R5203	
Suggested Retail \$54.99	



StrikeZone TD Sala strikezone	
Feature	Consumer Benefit
Soft synthetic upper	Ball touch, comfort and performance
Unique StrikeZone Bootie construction	Eliminates layers for pure, snug fit, shoe reaction and feel
Mesh and Stretch Span Bootie	Socklike fit, laceless feel
Covered StrikeZone lacing	Clean laceless ball strike
Full length EVA midsole	Comfort and cushioning
Rubber bladed stud outsole	Low to ground feel and traction on indoor surfaces
Radius edges on outsole	Smooth transition for on the ball moves
Men's Sizes: 6.5 - 12, 13 a. 136883 black/silver/yellow b. 136878 silver/red/black c. 136881 white/royal/silver	
R5203	
Suggested Retail \$54.99	



Jr StrikeZone RBR HG strikezone	
Feature	Consumer Benefit
Soft synthetic upper	Ball feel, comfort and performance
Covered StrikeZone lacing	Clean laceless ball strike
Padded foam sockliner	Comfort and cushioning
Rubber bladed stud outsole	Comfort and traction on natural surfaces
Junior Sizes: 10 - 6 a. 136919 black/silver/yellow b. 132551 silver/red/black c. 132552 white/royal/silver	
R5291	
Suggested Retail \$34.99	



Lightning Pro FG	absolute soccer	NEW
Feature	Consumer Benefit	
Kangaroo leather upper and tongue	Excellent ball feel, lightweight and durable	
Molded EVA sockliner with Poron® inserts in heel and forefoot	Comfort and cushioning	
TPU bladed stud configuration	Great comfort, traction and ball control on firm ground	
Made in Europe	Soccer craftsmanship	
Men's Sizes: 3 - 12, 13 a. 144390 white/royal b. 144388 black/silver/gunmetal		
Intro Date: 1/2006 R0066		
Suggested Retail \$119.99		



Lightning Strike Indoor		absolute soccer	NEW
Feature	Consumer Benefit		
Leather vamp	Great ball feel, comfort and durability		
Traditional foldover tongue	Professional styling		
Padded EVA foam sockliner	Comfort and cushioning		
CMEVA midsole with ventilation screen	Great comfort and cushioning while allowing breathability under foot		
Low profile rubber outsole with forefoot toe wrap	Great comfort, traction and durability on indoor and artificial surfaces		
Men's Sizes: 6.5 - 12, 13			
a. 144335 white/royal			
b. 144334 black/silver/gunmetal			
Intro Date: 1/2006			
R0033			
Suggested Retail \$59.99			



Lightning Clash EVO 15		absolute soccer	NEW
Feature	Consumer Benefit		
Soft synthetic upper	Ball feel, comfort and performance, lightweight and durable		
Minimal foldover tongue	Modern lightweight styling		
TPU bladed outsole	Comfort, stud dispersion and traction on hard ground		
Men's Sizes: 6.5 - 12, 13			
a. 144358 white/royal			
b. 144356 black/silver/gunmetal			
Intro Date: 1/2006			
R0572			
Suggested Retail \$44.99			



Notes

Lightning Clash MS		absolute soccer	NEW
Feature	Consumer Benefit		
Soft synthetic upper	Ball feel, comfort and performance, lightweight and durable		
Minimal foldover tongue	Modern lightweight styling		
Polyurethane multi-stud outsole	Traction on hard ground		
Men's Sizes: 3 - 12, 13 a. 144286 white/royal b. 144283 black/silver/gunmetal			
Intro Date: 1/2006 R5742			
Suggested Retail \$44.99			



Lightning Clash Indoor		absolute soccer	NEW
Feature	Consumer Benefit		
Soft synthetic upper	Ball feel, comfort and performance, lightweight and durable		
Traditional foldover tongue	Professional styling		
Padded EVA foam sockliner	Comfort and cushioning		
CMEVA midsole with ventilation screen	Great comfort and cushioning while allowing breathability under foot		
Low profile rubber outsole with forefoot toe wrap	Great comfort, traction and durability on indoor and artificial surfaces		
Men's Sizes: 6.5 - 12, 13			
a. 144372 white/royal			
b. 144367 black/silver/gunmetal			
Intro Date: 1/2006			
R0022			
Suggested Retail \$39.99			



Jr Lightning Clash RHG		absolute soccer	NEW
Feature	Consumer Benefit		
Soft synthetic upper	Ball feel, comfort and performance, lightweight and durable		
Minimal foldover tongue	Modern lightweight styling		
Rubber bladed outsole	Comfort and traction on hard ground		
Junior Sizes: 10 - 6			
a. 144394 white/royal			
b. 144392 black/silver/gunmetal			
Intro Date: 1/2006			
R0561			
Suggested Retail \$29.99			



Notes

Knee-to-Toe Package

FW6PK-G



Jr Campio SQ Turf boot classicNEW	
Feature	Consumer Benefit
Soft synthetic upper	Ball feel, comfort and performance, lightweight and durable
Traditional foldover tongue	Professional styling
Padded foam sockliner	Comfort and cushioning
Rubber outsole with multi-stud configuration	Comfort and traction on hard ground
Junior Sizes: 10 - 6 a. 147468 black/white/silver	
Intro Date: 1/2006 R0561	
Suggested Retail \$29.99	



Jr Campio SQ RBR HG boot classicNEW	
Feature	Consumer Benefit
Soft synthetic upper	Ball feel, comfort and performance, lightweight and durable
Traditional foldover tongue	Professional styling
Padded foam sockliner	Comfort and cushioning
Rubber bladed outsole	Comfort and traction on hard ground
Junior Sizes: 10 - 6 a. 144293 black/white/silver b. 147461 gunmetal/navy/white	
Intro Date: 1/2006 R5731	
Suggested Retail \$24.99	



Jr Lightning Clash RHG absolute soccerNEW	
Feature	Consumer Benefit
Soft synthetic upper	Ball feel, comfort and performance, lightweight and durable
Minimal foldover tongue	Modern lightweight styling
Rubber bladed outsole	Comfort and traction on hard ground
Junior Sizes: 10 - 6 a. 144394 white/royal b. 144392 black/silver/gunmetal	
Intro Date: 1/2006 R0561	
Suggested Retail \$29.99	



Garrison Mid rugby	
Feature	Consumer Benefit
Full-grain leather	Comfort
Reinforced toe	Protection
Stretch nylon internal gusset wrap tongue	Improved fit, comfort and added protection
TPU outsole with 8 Kite Mark rugby studs	True rugby traction
Mid-cut design	Added stability and support
Men's Sizes: 6.5 - 14, 15, 16, 17, 18 a. 133724 black/silver/red	
R044	
Suggested Retail \$79.99	



Garrison Low rugby	
Feature	Consumer Benefit
Full-grain leather vamp/toe	Ball touch
Padded pro style tongue and tongue top	Comfort and pro style lace covering
TPU outsole with 8 Kite Mark rugby studs	True rugby traction
Low-cut design	Added mobility
Men's Sizes: 6.5 - 14, 15, 16, 17, 18 a. 133726 black/silver/red	
R5214	
Suggested Retail \$74.99	



Powerpax Plus shinguards	
Feature	Consumer Benefit
PE outer shell	Impact deflection
Fanshape stitched backer	Impact absorption
Elastic and EVA ankle and achilles	Ankle protection unit
Sizes: XXS, XS, S, M, L 133584 red/silver/black 133583 silver/black 90237 white/black/silver	
R006	
Suggested Retail \$11.99	

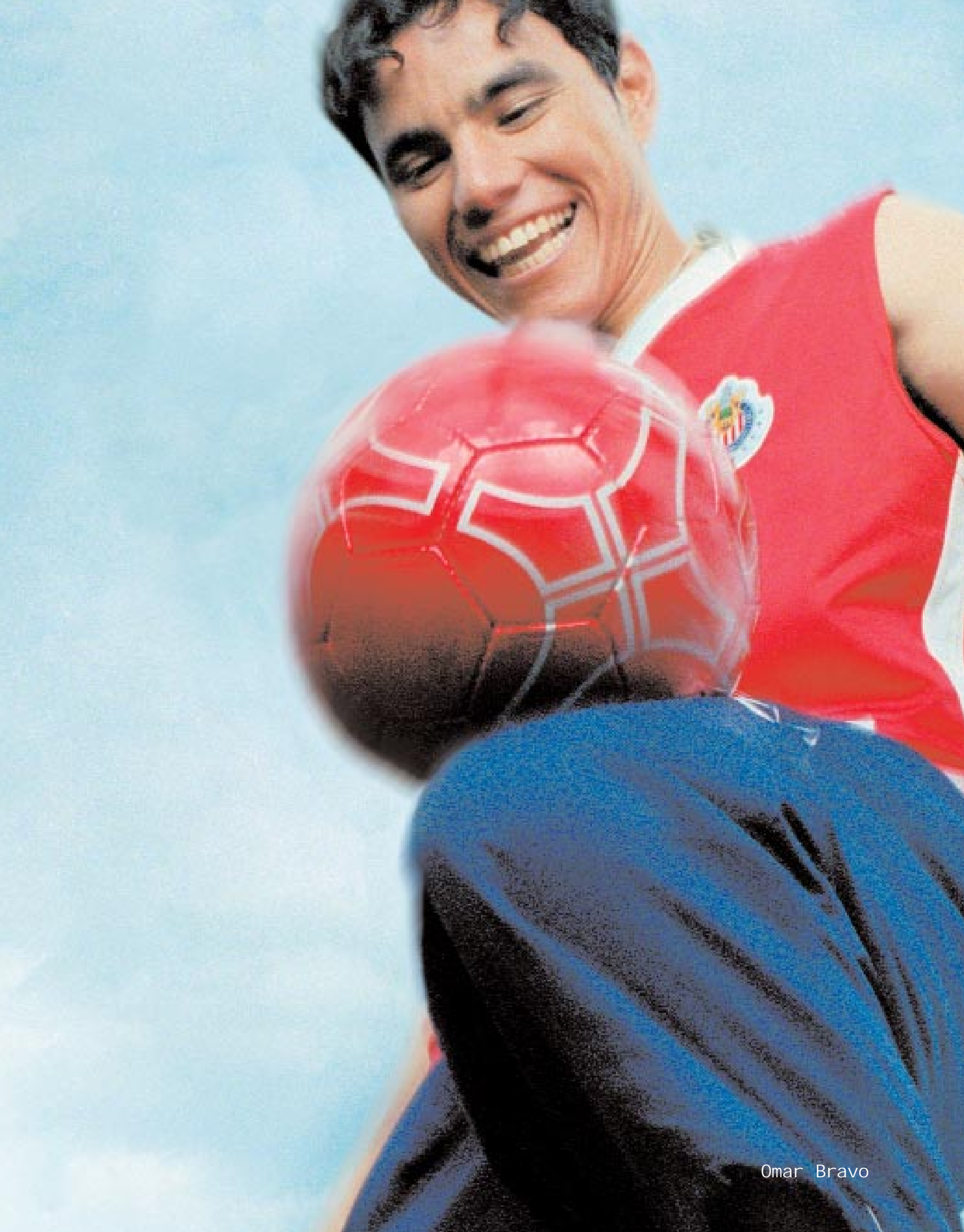


Reebok Vector vector soccer balls	
Feature	Consumer Benefit
Abrasion resistant cover	Durability, soft feel
Counter balanced, Butyl bladder	Maximum air retention
Excellent for all training conditions	
Sizes: see below 5: box 5: bulk 4: bulk 3: bulk	
a. 145542 145576 146415 146416 silver/yellow	
b. 145541 145575 146123 146414 silver/red	
c. 145184 145572 145637 145638 silver/blue	
d. 145547 145581 146417 146418 white/yellow	
e. 145546 145580 146419 146420 white/red	
f. 145543 145577 145648 145650 white/blue	
R547 box, R545 bulk	
Suggested Retail \$14.99 box, \$12.99 bulk	
Boxed styles are in 6-pack	



Exile Mid rugby	
Feature	Consumer Benefit
Synthetic upper	Comfort and lightweight
Reinforced toe	Protection
Padded tongue	Protection and comfort
TPU outsole with 8 Kite Mark rugby studs	True rugby traction
Mid-cut design	Added stability and support
Men's Sizes: 6.5 - 14, 15, 16, 17, 18 a. 133720 black/silver	
R0033	
Suggested Retail \$59.99	

Notes



Omar Bravo



Total Control Pro FG chivas	
Feature	Consumer Benefit
Kangaroo leather upper	Excellent ball touch and durability
One piece side lacing	Glove-like fit, increased ball strike area
Molded sockliner with PU inserts in heel and forefoot	Stud dispersion and comfort
Launch Control TU blade stud outsole	Comfort, stud dispersion and traction on firm/hard surfaces
Made in Europe	Soccer craftsmanship
Men's Sizes: 3 - 12, 13	
a. 142391 navy/white - Chivas	
b. 133907 red/white - Chivas	
R0077	
Suggested Retail \$139.99	



Total Control Hammer TPU chivas	
Feature	Consumer Benefit
Soft synthetic upper	Ball feel, comfort and performance
Side lacing	Increased ball strike area
Minimal foldover tongue	Modern styling
Polyurethane multi-stud outsole	Traction on firm ground
Men Sizes: 6.5 - 12, 13	
a. 143528 navy/white - Chivas	
b. 135036 red/white - Chivas	
R5742	
Suggested Retail \$44.99	



Total Control Hammer ID chivas	
Feature	Consumer Benefit
Soft synthetic upper	Ball feel, comfort and performance
Side lacing	Increased ball strike area
Minimal foldover tongue	Modern styling
Gum rubber indoor outsole	Traction on artificial and hard playing surfaces
Men's Sizes: 6.5 - 12, 13	
a. 141328 navy/white - Chivas	
b. 134354 red/white - Chivas	
R0022	
Suggested Retail \$39.99	

Notes

Total Control Hammer Turf chivas

Feature	Consumer Benefit
Side lacing	Increased ball strike area
Soft synthetic upper	Ball feel, comfort and performance
Minimal foldover tongue	Modern lightweight styling
EVA midsole	Shock absorption
Rubber multi-stud turf outsole	Traction on artificial and hard natural surfaces

Men's Sizes: 6.5 - 12, 13
a. 134355 red/white - Chivas

R0022

Suggested Retail \$39.99



a.

Jr Total Control RBR HG chivas

Feature	Consumer Benefit
Soft synthetic upper	Ball feel, comfort and performance
Side lacing	Increased ball strike area
Padded foam sockliner	Comfort and cushioning
Rubber bladed stud outsole	Comfort and traction on natural surfaces

Junior Sizes: 10 - 6
a. 135463 red/white - Chivas

R0561

Suggested Retail \$29.99



a.

Club Flip chivas

Feature	Consumer Benefit
Soccer badge on strap	Style
Injected PU footbed/bottom	True slide sandal comfort
Injected PU upper strap	Comfort

Unisex Sizes: 2 - 19 (whole sizes)
a. 117642 black/red/navy - Chivas

R0011

Suggested Retail \$19.99



a.

Notes

Notes

Match Ready M25 chivas

NEW

Feature	Consumer Benefit
Full-grain leather vamp/toe	Ball touch and comfort
Traditional foldover tongue	Professional styling
M25 TPU outsole featuring 25 mini molded studs	Comfort and traction on hard and artificial surfaces

Men's Sizes: 6.5 - 12, 13
a. 144274 white/red/navy/silver - Chivas

Intro Date: 1/2006
R5203

Suggested Retail \$54.99



a.

Match Ready MS chivas

NEW

Feature	Consumer Benefit
Full-grain leather vamp/toe	Ball touch and comfort
Traditional foldover tongue	Professional styling
Polyurethane multi-stud outsole	Traction on firm ground

Men's Sizes: 3 - 12, 13
a. 151927 white/red/navy/silver - Chivas

Intro Date: 1/2006
R0572

Suggested Retail \$49.99



a.

Match Ready Sala chivas

NEW

Feature	Consumer Benefit
Full-grain leather vamp/toe	Ball touch and comfort
Traditional foldover tongue	Professional styling
Full length low profile EVA midsole	Cushioning, low-to-ground soccer feel
Gum rubber outsole	Low profile traction for indoor surfaces

Men's Sizes: 6.5 - 12, 13
a. 144326 white/red/navy/silver - Chivas

Intro Date: 1/2006
R5203

Suggested Retail \$54.99



a.



Encanto Club chivas shinguard

Feature	Consumer Benefit
PE outer shell	Impact deflection
Fanshape stitched EVA backer	Custom fit with impact absorption
Elastic and EVA ankle protection	Ankle and achilles protection unit

Sizes: XXS, XS, S, M, L
141030 white/blue/red

R006

Suggested Retail \$11.99



Primaro Club chivas shinguard

Feature	Consumer Benefit
PE outer shell	Impact deflection
Fanshape stitched EVA backer	Custom fit with impact absorption
Elastic closure	Snug fit

Sizes: XXS, XS, S, M, L
141031 white/blue/red

R053

Suggested Retail \$6.99



Chivas Badge Authentic chivas balls

Feature	Consumer Benefit
Premier composite cover	Excellent abrasion resistance, soft feel
Counter balanced, Butyl bladder	Maximum air retention

Excellent for all playing, training conditions

Sizes: see below
5: box 4: box
122014 145657 white/red

R5421

Suggested Retail \$24.99



Chivas Badge chivas balls

Feature	Consumer Benefit
Abrasion resistant cover	Durability, soft feel
Counter balanced, Butyl bladder	Maximum air retention

Excellent for all training conditions

Sizes: see below
5: box 4: box
145566 145658 white/red

R549

Suggested Retail \$19.99



Chivas Star chivas balls

Feature	Consumer Benefit
Premier composite cover	Excellent abrasion resistance, soft feel
Counter balanced, Butyl bladder	Maximum air retention

Excellent for all playing, training conditions

Sizes: see below
5: box 4: box
145548 silver
145549 white

R5421

Suggested Retail \$24.99



Chivas Fighter chivas balls

Feature	Consumer Benefit
Abrasion resistant cover	Durability, soft feel
Counter balanced, Butyl bladder	Maximum air retention

Excellent for all playing, training conditions

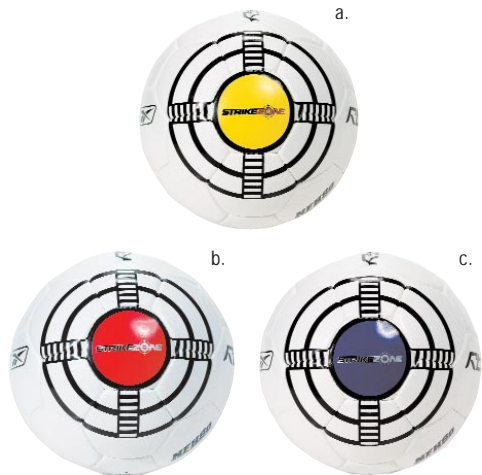
Sizes: see below
5: box 4: box 3: box
122015 145660 145659 white/red

R547

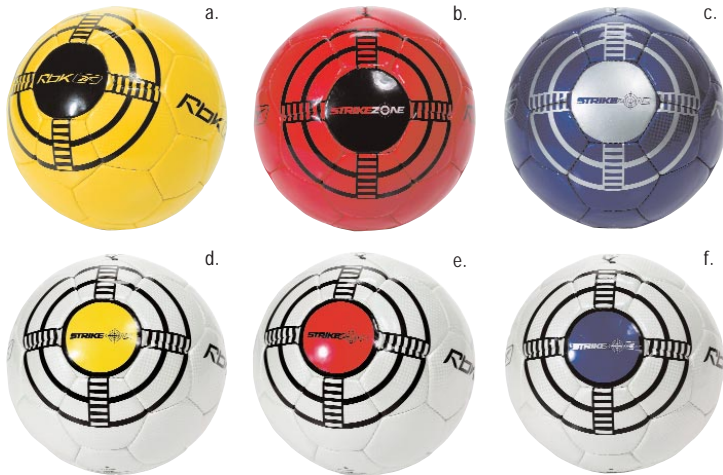
Suggested Retail \$14.99



Iker Casillas



Rbk Strike Zone Match Ball rbk	
Feature	Consumer Benefit
Rbk cover to core construction	Excellent abrasion resistance, soft feel
Total Control composite cover	Excellent abrasion resistance, soft feel
Counter balanced, thermal polyurethane bladder	Excellent air retention
Rbk premier match play ball NFHS approved	Excellent for all playing conditions
Sizes: 5	
box	bulk
a. 122008	145556 yellow
b. 122009	145557 red
c. 122010	145559 blue
R0003 box, R0092 bulk	
Suggested Retail \$59.99 box, bulk	
Boxed styles are in 6-pack	



Rbk Strike Zone rbk	
Feature	Consumer Benefit
Rbk composite cover	Excellent abrasion resistance, soft feel
Counter balanced, Butyl bladder	Maximum air retention
Excellent for all playing, training conditions	
NFHS approved (white only)	
Sizes: see below	
5: box	5: bulk
a. 122011	145560 yellow
b. 122012	145561 red
c. 122013	145562 blue
R5441 box, R0041 bulk	
5: box	5: bulk 4: bulk
d. 145550	145553 148021 white/yellow
e. 145551	145554 148026 white/red
f. 145552	145555 148029 white/blue
R5941 box, R5441 bulk	
Suggested Retail \$29.99 box, bulk all colors	
Boxed styles are in 6-pack	



StrikeZone Pro Fit shinguards	
Feature	Consumer Benefit
Dual density PU shield	Lightweight protection with flexibility for custom fit
EVA foam backer	Protection from impact
Compression sleeve covering	Comfort, support and tight fit for strapless guard
Sizes: M, L	
147288	black/silver
R0521	
Suggested Retail \$24.99	



StrikeZone Duro Plus shinguards	
Feature	Consumer Benefit
PE outer shell	Impact deflection
Cored out honey comb on shell	Lessens weight without compromising protection
EVA foam backer	Protection and comfort
Elastic and EVA ankle and achilles	Ankle protection unit
Sizes: XXS, XS, S, M, L	
147287	silver/black
R057	
Suggested Retail \$14.99	



Tritec TD shinguards	
Feature	Consumer Benefit
Unique separate slide in shinguard and compression sock with mesh guard pocket	Compression sock comfort and fit that keeps guard away from skin
High density PU deflective plate	Maximum hardshell protection
Breathable sock	Comfort
EVA backed foreplate	Shock absorption
Sizes: XXS, XS, S, M, L	
100290	silver/black/red
R057	
Suggested Retail \$14.99	



Reebok Vector vector	
Feature	Consumer Benefit
Abrasion resistant cover	Durability, soft feel
Counter balanced, Butyl bladder	Maximum air retention
Excellent for all training conditions	
Sizes: see below	
5: box	5: bulk 4: bulk 3: box 3: bulk
a. 145542	145576 146415 146416 silver/yellow
b. 145541	145575 146123 146414 silver/red
c. 145184	145572 145635 145637 145636 145638 silver/blue
d. 145547	145581 146417 146418 white/yellow
e. 145546	145580 146419 146420 white/red
f. 145543	145577 145642 145648 145644 145650 white/blue
R547 box, R545 bulk	
Suggested Retail \$14.99 box, \$12.99 bulk	
Boxed styles are in 6-pack	



Rbk VR-5000 Match Ball	
Feature	Consumer Benefit
Rbk cover to core construction	Excellent abrasion resistance, soft feel
Total Control composite cover	Excellent abrasion resistance, soft feel
Counter balanced, thermal polyurethane bladder	Excellent air retention
Rbk premier match play ball NFHS approved	Excellent for all playing conditions
Sizes: 5	
bulk	
a. 121551	white/silver
R0002	
Suggested Retail \$45.00	



Rbk VR-4000 match/training	
Feature	Consumer Benefit
Rbk composite cover	Excellent abrasion resistance, soft feel
Counter balanced, Butyl bladder	Maximum air retention
Excellent for all playing, training conditions	
NFHS approved	
Sizes: see below	
5: bulk 4: bulk	
a. 121552	145590 white/blue
R0521	
Suggested Retail \$30.00	



Powerpax Plus shinguards	
Feature	Consumer Benefit
PE outer shell	Impact deflection
Fanshape stitched backer	Impact absorption
Elastic and EVA ankle and achilles	Ankle protection unit
Sizes: XXS, XS, S, M, L	
133584	red/silver/black
133583	silver/black
90237	white/black/silver
R006	
Suggested Retail \$11.99	



Powerpax shinguards	
Feature	Consumer Benefit
Protective shell	Impact dispersion
Foam backer	Shock absorption
Sizes: XXS, XS, S, M, L	
133586	red/silver/black
133585	silver/black
90232	white/black/silver
R053	
Suggested Retail \$6.99	



StrikeZone Pro Keeper glove

Feature	Consumer Benefit
3.5MM supersoft latex palm 4mm welded PU backhand Traditional cut with full latex fingers Extended wrist badge Adjustable wrist closure	High performance grip in all weather Comfort and protection Proper fit, increased grip Wrist protection Sure fit
Sizes: 7, 8, 9, 10, 11 147291 white/black/yellow R0004	
Suggested Retail \$79.99	



Extender Pro goalkeeper gloves

Feature	Consumer Benefit
One piece welded palm and upper hand Play Dry moisture management glove body Dual lock elasticized wrist support piece 3.5mm supersoft high grip latex palm with injected graphite technology 4mm soft PU welded backhand	Excellent comfort and grip Removes moisture away from hand Custom fit High performance grip in all weather with increased durability Lightweight comfort and protection
Sizes: 7, 8, 9, 10, 11 100253 white/black/silver R0004	
Suggested Retail \$79.99	



Graphite Gun Fingertec goalkeeper gloves

Feature	Consumer Benefit
3.5mm supersoft graphite injected padded latex foam palm FingerTec TPU backhand support piece Roled fingers and thumb top Elastic wrist bandage and wider belt PU and foam upperhand and thumb Soft polyurethane body	Durability and grip Protection Greater catching surface area Custom fit and increased wrist support Protection Comfort
Sizes: 7, 8, 9, 10, 11 100262 white/black R0053	
Suggested Retail \$69.99	

ANY OFFER TO SELL BY REEBOK AS WELL AS ANY ACCEPTANCE BY REEBOK OF A PURCHASER'S ORDER IS EXPRESSLY MADE CONDITIONAL UPON PURCHASER'S ASSENT TO REEBOK'S AUTHORIZED RETAIL DEALER AGREEMENT AND TO THESE TERMS AND CONDITIONS OF SALE AND NO OTHERS. PURCHASER'S TAKING DELIVERY OF ANY PRODUCT OR PAYMENT OF ANY INVOICE SHALL BE CONCLUSIVE EVIDENCE OF SUCH ASSENT.

Orders: All orders are subject to acceptance by an authorized official of Reebok at Reebok's Corporate Headquarters Office in Canton, Massachusetts. Acceptance by Reebok of an order shall be deemed to occur only upon the tendering of delivery of the products that are the subject of such order to the carrier for delivery to Purchaser. Acceptance by Reebok is limited to the terms stated herein and in the Reebok Authorized Retail Dealer Agreement. Such terms and conditions shall control irrespective of any inconsistent, different or additional terms and conditions, whether printed or otherwise, set forth in any communication from Purchaser to Reebok, including without limitation in any Purchaser purchase order, confirmation, routing guide or manual revision and Reebok hereby rejects any such inconsistent, different or additional terms or conditions unless otherwise specifically agreed to in writing by Reebok. Without limiting the foregoing, Reebok further rejects terms and conditions inconsistent with, different from or additional to those contained herein which are contained on any website of Purchaser for which access is conditioned on acceptance of such terms and conditions. A functional acknowledgement sent on receipt of an electronic order does not constitute acceptance of electronic data interchange orders (see the Reebok Electronic Data Interchange Trading Partner Agreement for further detail).

Minimum Order Size: Orders will not be accepted for a "mark for"/packing level of less than six (6) units .

Prices: No employee, Reebok sales representative or any other party other than an officer of Reebok is authorized to alter Reebok's pricing and other terms and conditions of sale. All prices are subject to change without notice. Orders will be billed at prices prevailing at the time of order as reflected on Reebok's then current price list. Reebok will not recognize any terms outside of its standard programs except as specifically agreed in writing by Reebok. The amount reflected in a Reebok invoice will be deemed accepted and binding upon Purchaser unless Purchaser notifies Reebok in writing of a dispute within thirty (30) days of the date of the invoice.

Payment Terms: Unless otherwise stated on the invoice, terms of payment shall be net thirty (30) days from the invoice date. Purchaser shall not set off against or deduct from any amounts due to Reebok hereunder all or any part of any amounts owed or alleged to be owed by Reebok to Purchaser. Chargebacks will not be accepted by Reebok unless agreed to in writing between Reebok and Purchaser. A service charge of 1 1/2% per month will be charged on all past due invoices plus costs of collection (including attorneys' fees). This is an annual percentage rate of 18%. There are no discounts to customers having an overdue balance. Each order placed by Purchaser and accepted by Reebok shall be considered an independent transaction, and payment therefore shall be due accordingly. If Reebok, in its sole discretion, at any time is unsatisfied with Purchaser's financial responsibility, or feels it needs further assurance that Purchaser will pay for outstanding orders, Reebok shall be entitled to require Purchaser to pay for its orders on a cash-in-advance basis. If Purchaser is in default under any agreement with Reebok, or fails to comply with any written rule or policy of Reebok, Reebok shall have the right, without prejudice to any other legal remedy, of canceling all outstanding orders. Until payment of all obligations of Purchaser to Reebok is received in full, Reebok shall retain a security interest in the goods covered by this order and the proceeds thereof, with Purchaser agreeing to execute all documents which may be necessary or appropriate to protect and perfect Reebok's security interest therein. Reebok shall have the right to set off and deduct any amounts due to Reebok from Purchaser against and from any amounts owed or allegedly owed by Reebok to Purchaser.

Audit Claims: Reebok invoices will not be subject to any audit claim by Purchaser unless Purchaser notifies Reebok within thirty (30) days after the date such invoice is due.

Delivery: All warehouse orders are shipped F.O.B. shipping point (Reebok loading dock). Container dropship orders are shipped F.O.B. port of entry or as otherwise agreed between the parties. All container dropship Purchasers assume ownership of goods upon notification to Purchaser's designated carrier of availability of the container for pickup (by facsimile delivery of the delivery order therefor, telephone notification or such other method as is customary for presentation) within the delivery window set forth in Reebok's Trading Partner Guidelines from time to time (or such other guidelines as Reebok may issue) required to meet the "in-store" or other delivery date indicated on the purchase order, or as otherwise agreed between the parties. Unless otherwise directed by Purchaser, Reebok will use the carrier designated by Purchaser. Purchaser is responsible for all payments due to the carrier. Purchaser assumes all risk of loss upon delivery of products by Reebok to Purchaser's carrier in the case of warehouse orders and to the bailee in the case of container orders. Reebok is under no obligation to insure shipments unless specifically requested by Purchaser and then only at Purchaser's expense and valuation.

Reebok reserves the right to make shipments in installments within the delivery window indicated on the purchase order. Reebok will attempt to meet delivery schedules requested by Purchaser. However, all delivery indications are estimates only. In no event will Reebok assume any liability, consequential or otherwise, as a result of Reebok's failure to deliver product in accordance with indicated delivery schedules. Delivery of part of an order does not obligate Reebok to make further deliveries, and partial deliveries will be billed when made.

Changes in Orders: Changes in orders will be considered only (i) within thirty (30) days of order submission in the case of container orders, or (ii) no later than forty-five (45) days prior to the first shipment date indicated on the order in the case of warehouse orders.

Order Termination by Purchaser: Warehouse orders may be cancelled by the Purchaser only upon written authorization from Reebok's Corporate Headquarters Office in Canton, Massachusetts and only will be considered if requested no later than forty-five (45) days prior to the first shipment date indicated on the applicable order. Container orders may not be cancelled. Any exceptions to the foregoing order termination policy with respect to container orders may only be made with the written approval of a Reebok Sales Vice President. Cancellations exceeding 10% of any monthly futures bookings will result in loss of discount. Special make-up orders and custom product orders are not cancellable under any circumstance.

No Transshipments: Reebok sells only directly to selected retail outlets for resale by them only to end users at approved physical retail locations. Proposed sale at any new retail outlet requires advance written approval from an authorized Reebok official of Reebok's Corporate Headquarters Office in Canton, Massachusetts. Resale or transshipment of merchandise to an unauthorized location or to another business is expressly prohibited, violates the terms and conditions of sale and may result in cancellation of existing orders and/or termination of Purchaser's business relationship with Reebok. It is understood and agreed that said prohibition of transshipment includes without limitation sales via the Internet or other media, fulfillment of sales originating from electronic media, as well as sales through mail, direct order or catalogues, unless expressly authorized in writing through a separate contractual agreement with Reebok. Purchaser will not purchase Reebok products from any source other than Reebok.

Change in Ownership: In the event of a sale of or a partial or total change in ownership in Purchaser or any of Purchaser's approved retail outlets, the new owner(s) must apply to Reebok for approval as an authorized dealer and Purchaser will not be eligible to obtain Reebok merchandise until the application is approved in writing by Reebok's Corporate Headquarters Office in Canton, Massachusetts.

Representative Amount of the Line: Reebok sells only to retail outlets which carry a representative amount of the line as deemed appropriate by Reebok in light of the type of retail outlet, the status of Reebok's line or lines of merchandise, and marketing conditions. Failure of a retailer to do so contravenes the terms and conditions of sale and may result in cancellation of existing orders and/or termination of Purchaser's business relationship with Reebok.

Distribution Channels: Reebok reserves the right to limit the distribution of some product lines or segments to certain selected distribution channels.

Design Changes: Reebok reserves the right to discontinue product lines and to make changes offered in products at any time.

Allocations: Acceptance of orders and shipments are subject to allocation by Reebok in times of product shortages in response to factors deemed most appropriate by Reebok at the time.

Merchandising of Products: Purchaser agrees to (a) provide prompt, courteous service to its Reebok consumers using personnel trained in the selling and servicing of athletic products and Reebok products in particular; and (b) merchandise Reebok products consistent with guidelines established by Reebok including with respect to the in-store display of Reebok products.

Shortages: All claims for lost or damaged shipments (a) with respect to warehouse orders, must be made directly to the delivering carrier, and (b) with respect to containers, must be made in accordance with Reebok's claims policy, a copy of which is available on request. Shortages due to packing errors must be reported to Purchaser's Reebok Account Service Representative in Canton, Massachusetts within fifteen (15) days of receipt in the case of shortages in cartons and within thirty (30) days of receipt in the case of concealed shortages.

Return Goods Policy: All returns, including the product assortment and quantity to be included as a return, are subject to pre-authorization by Purchaser's Reebok Account Service Representative at Reebok's Corporate Headquarters Office in Canton, Massachusetts. Defective and return to stock items must be authorized and returned separately. Upon approval by Reebok, a Return Authorization Number and, if requested, Label, which must be clearly affixed to the outside of the carton will be issued to the customer. Purchaser is responsible for freight and handling charges on returns of any product other than authorized defective merchandise. Purchaser must follow Reebok's Returns Guidelines to ship authorized defective returns under Reebok's freight carrier contracts. Freight for defective merchandise that is shipped under the Purchaser's freight contracts is not accepted as a deduction on product invoices and is not accepted for reimbursement. Returns not carrying the Reebok Return Authorization Number will be refused delivery by Reebok and will be returned to the Purchaser. Reebok is not responsible for freight charges resulting from unauthorized returns. Merchandise must be returned in the same salable condition as received. Credit will not be issued for any product items or quantities other than as specifically included in the pre-authorization. All returns must be shipped to Reebok in accordance with Reebok's Routing Guide for return freight. With defective merchandise, the customer's account will be credited at full value. First quality returns will be credited to the customer's account at full value less a fifteen percent (15%) restocking charge. Shipments refused by the Purchaser will be credited at full value if the shipment error is by Reebok. Shipments refused for reasons not attributable to Reebok will be credited at full value less fifteen percent (15%) restocking charge. Reebok reserves the right to assess a charge on return shipments for the removal of any pre-ticketing.

Customer Routing and Logistic Requirements: Reebok will not be bound to terms, directives or requirements set forth by Purchaser through Routing and Logistic Guides unless Reebok has agreed in writing to such terms, directives or requirements. In addition, Purchaser may incur charges for value added services (labeling, ticketing, and special packaging). Routing and Logistic Manuals should be directed to the Compliance Department located at Reebok's corporate headquarters office in Canton, Massachusetts.

Limited Warranty: Reebok warrants that its products, at the time of shipment, are free from defects in workmanship and materials. THE WARRANTY DESCRIBED IN THIS PARAGRAPH SHALL BE IN LIEU OF ANY OTHER WARRANTY, EXPRESS OR IMPLIED, INCLUDING BUT NOT LIMITED TO, ANY IMPLIED WARRANTY OF MERCHANTABILITY OR FITNESS FOR A PARTICULAR PURPOSE. Purchaser's remedies are exclusively limited to replacement of or credit for any defective product (at the option of Reebok) but such replacement or credit shall be made only if the Purchaser follows the terms and conditions set forth herein under the "Return Goods Policy" section.

Production Standards: Products covered by any Reebok invoice are produced and furnished in accordance with the Reebok Human Rights Production Standards, a copy of which is available on request made to Reebok.

Limitation of Liability: REEBOK ASSUMES NO LIABILITY EXCEPT AS EXPRESSLY PROVIDED IN THESE TERMS AND CONDITIONS AND IN NO EVENT WILL REEBOK BE LIABLE FOR LOSS OF PROFITS, INTERRUPTION OF BUSINESS OR ANY OTHER SPECIAL INDIRECT, INCIDENTAL, OR CONSEQUENTIAL DAMAGES, WHETHER ARISING IN CONTRACT, IN TORT, UNDER WARRANTY OR OTHERWISE.

Force Majeure: If a delivery date is specified, that date will be extended to the extent that delivery is delayed by reason of fire, flood, war, riot, strike, natural disaster, or any other event beyond Reebok's reasonable control and if, as a result of such a delay, the goods ordered are unavailable, Reebok may substitute comparable goods.

General: This contract shall be construed and enforced in accordance with the laws of Massachusetts. The Massachusetts courts (state and federal) will have exclusive jurisdiction of any controversy between Purchaser and Reebok, and no court action may be brought by either party against the other outside of Massachusetts. Both Reebok and Purchaser waive their right to jury trial in any controversy or court action between them. Any action for breach of contract must be commenced within one (1) year from the date of the delivery of the goods. Purchaser's rights under this contract may not be assigned, transferred, or sold by Purchaser without the prior written consent of Reebok, and such assignment will be void. Reebok may assign this contract only to a parent, subsidiary, or affiliated firm, or to another entity in connection with the merger, sale or transfer of all or substantially all of its business. Subject to these restrictions, the provisions of the contract shall be binding upon and inure to the benefit of the parties, their successors, and permitted assigns. Terms and conditions are subject to change by Reebok without prior notice. The Reebok Authorized Retail Dealer Agreement and these terms and conditions of sale constitute the entire agreement between the parties with respect to the subject matter hereof and supercede all previous agreements or understandings between the parties with respect thereto. No additions to, deletion from, or modification of any of the provisions herein shall be binding upon Reebok unless made in writing and signed by a duly authorized representative of Reebok, the terms and conditions herein being final, complete and exclusive statement of terms of agreement between Reebok and Purchaser.

CORPORATE OFFICE

Reebok International Ltd.

1895 J.W. Foster Boulevard

Canton, MA 02021

781-401-5000

TEAM CUSTOMER SERVICE

888.405.TEAM (888.405.8326)



Total Keeper goalkeeper gloves

Feature	Consumer Benefit
3mm latex foam palm Extended thumb and palm Welded foam backhand Extended elastic wrist badge	High performance grip Greater grip area for throws Protection and comfort Greater support
Sizes: 7, 8, 9, 10, 11 133587 silver/white/black R0002	
Suggested Retail \$39.99	



Vandal GK goalkeeper gloves

Feature	Consumer Benefit
3.5mm compressed and textured latex foam Elastic wrist Vented seam 2.5mm welded foam backhand	Superb grip and increased durability Fit Easy entry Protection and comfort
Sizes: 7, 8, 9, 10, 11 133589 red/white/black R0051	
Suggested Retail \$29.99	



GK 618 Jr / Catch II Jr goalkeeper gloves

Feature	Consumer Benefit
GK 618 Jr: 2.5mm compressed and textured latex foam Velcro® brand wrist closure	Grip and increased durability Fit and support
Catch II Jr: Compressed foam palm parts Soft breathable polyester fabric Side slit and short belt	Durability Comfort Easy entry, good fit for youth and kids
Jr Sizes: 4, 5, 6 100259 white/metallic blue/silver - GK 618 Jr 100248 white/red/blue - Catch II Jr R058, R005	
Suggested Retail \$16.99, \$9.99	