

A full-page photograph of a woman running on a bridge. She is wearing a bright yellow-green Reebok jacket with dark blue accents on the sleeves, black running leggings, a black Reebok training cap, and white running shoes. The background shows the ornate metal railing of a bridge and a clear sky.

Reebok

Amy Mortimer
Trinity - Page 2
Jacket - Page 22
Knicker - Page 23
Training Cap - Page 31

**RUNNING
SPECIALTY**
fall | winter 2007

TECHNOLOGY

KFS — KINETIC FIT SYSTEM

KFS is a unique upper technology that provides comfort, support, and flexibility in critical areas of the foot. Strategically placed expansion joints allow upper panels to move interdependently, addressing the biomechanical needs of the foot in motion.

DMX Foam

DMX Foam offers the runner traditional cushioning and comfort for a smoother ride. A Reebok proprietary formula of foam cushioning, DMX Foam is placed in key locations in the midsole. The durometer (firmness) of the foam varies depending on the location of the placement. When placed closer to the ground the DMX Foam used is firmer for impact protection. When placed closer to the foot the DMX Foam used is softer to promote comfort.

DMX SHEAR

DMX Shear provides horizontal cushioning by allowing the heel of the shoe to move independently from the rest of the shoe, cushioning both vertically (as in traditional footwear) and horizontally. This shearing action absorbs and smoothes some of the horizontal braking that occurs when an athlete's heel strikes the ground and extends the amount of time the heel stays on the ground, lowering overall impact forces.

THE Pump

The Pump provides athletes with a custom fit by surrounding areas of the foot with an adjustable, form fitting air chamber. By pressing on the actuator, the air chamber will gradually form to the exact shape of the athlete's foot. A custom fit and custom shoe every time you step onto the pavement.

3D TECHNOLOGY

3D Technology outsole material replaces traditional rubber outsole construction to produce lighter, more flexible, smoother riding footwear. 3D Technology is a Reebok proprietary blend of materials including EVA, rubber and other compounds.

DMPRTEK

DMPRTEK is a new carbon compound that combines the responsiveness and flexibility found in Blown Rubber with the durability traditionally found in carbon based outsoles. This unique combination provides today's runner with a longer lasting and lighter outsole.

PLAY DRY

PLAY DRY is a moisture management system that helps keep you cooler, drier, and more comfortable during training and competition by moving moisture away from your skin to the outer layer of the fabric for quick evaporation. Unlike other moisture management technologies, PLAY DRY is mechanically woven directly into the fabric and won't wash out over time. PLAY DRY fabrics can be found in Rbk apparel and footwear.

PLAY WARM

PLAY WARM is a cover layer that creates dead air space to slow the body's thermal energy loss, while assisting in the dispersion of moisture initiated by the PLAY DRY base layer.

PLAY SHIELD

PLAY SHIELD is an outer layer that acts as the final shield against the elements. Breathable linings, friction reducing fabrics, strategic venting and ergonomic construction integrate to maximize the athletic performance in the most inclement weather.

CONTENTS

2-15 FOOTWEAR

16-21 MEN'S APPAREL

22-30 WOMEN'S APPAREL

31-35 ACCESSORIES

STABILITY

PREMIER TRINITY KFS II

Feature/Benefits: Kinetic Fit System | Comfort, support, flexibility in critical areas of the foot • Open weave mesh upper | Comfort, fit and breathability • Full length EVA lasting | Enhanced comfort and added cushioning • 3M Scotchlite® material | Night running safety • Removable EVA sockliner | Accommodates orthotics • PLAYDRY lining | Moisture management • DMX Foam | Cushioning • DMX Shear Vertical | horizontal cushioning, reduces stress of heel impact • CMEVA midsole | Stability and cushioning • Transition Bridge | Heel-to-toe transition • Dual density medial post | Stability • DMPRTEK rubber outsole Cushioning, traction and durability • Forefoot flex grooves | Flexibility • Carbon rubber heel strike | Durable traction • Width sizing | Custom fit

Men's sizes: 6.5–14, 15 R5236

175987 (a.) WHITE | SILVER | RELAY RED | BLACK

172053 (b.) MET. SILVER | WHITE | BLACK | TEAM DARK ROYAL

173030 (WIDE) MET. SILVER | WHITE | BLACK | TEAM DARK ROYAL

suggested retail **\$114.99**

available 7.1.07

available 7.1.07

available 7.1.07

Women's sizes: 5–12 R5236

172067 (c.) WHITE | MET. SILVER | SHIELD GREY | C.BLUE | BLK

172069 (d.) MET. SILVER | WHITE | TULIP | SHIELD GREY | BLACK

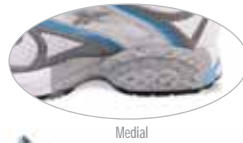
173033 (WIDE) WHITE | MET. SILVER | SHIELD GREY | C.BLUE | BLK

suggested retail **\$114.99**

available 7.1.07

available 7.1.07

available 7.1.07



NEW: Update to Premier Trinity KFS

rbkrunning.com

2 ◀

STABILITY

PREMIER ROAD PLUS KFS

Feature/Benefits: Kinetic fit system | Comfort, support, flexibility in critical areas of the foot • EVA lasting | Enhanced comfort and added cushioning • 3M Scotchlite® material | Night running safety • Removable sockliner | Accommodates orthotics • PLAYDRY lining | Moisture management • DMX Foam | Cushioning • Eclipse™ EVA midsole | Cushioning • Transition Bridge | Heel-to-toe transition • Dual density medial post | Added stability • DMPRTEK rubber outsole | Cushioning, traction and durability • Width sizing | Custom fit

Men's sizes: 6.5-14, 15, 16, 17, 18, 19 R0594 *suggested retail \$89.99*

160141 (a.) SILVER | PIMA AIR | WHITE | BLACK

available 2.1.07

172980 (b.) STEEL | INDIGO GREY | NEPAL RED | WINTER SKY | WHITE

available 7.1.07

170838 (WIDE) SILVER | PIMA AIR | WHITE | BLACK

available 2.1.07

Women's sizes: 5-12 R0594

suggested retail \$89.99

160144 (c.) SILVER | BLUE SCRUB | WHITE | SHARK

available 2.1.07

172989 (d.) STEEL | SHIELD GREY | TULIP | WHITE

available 7.1.07

170839 (WIDE) SILVER | BLUE SCRUB | WHITE | SHARK

available 2.1.07



(a.) Men's



(b.) Men's



Medial



(d.) Women's



(c.) Women's

STABILITY

PREMIER ROAD PLUS KFS AW

Feature/Benefits: Kinetic fit system | Comfort, support, flexibility in critical areas of the foot • EVA lasting | Enhanced comfort and added cushioning • 3M Scotchlite® material | Night running safety • Removable sockliner | Accommodates orthotics • PLAYDRY lining | Moisture management • DMX Foam | Cushioning • Eclipse™ EVA midsole | Cushioning • Transition Bridge | Heel-to-toe transition • Dual density medial post | Added stability • DMPRTEK rubber outsole | Cushioning, traction and durability • Width sizing | Custom fit

Men's sizes: 6.5–14, 15 R5225
176440 (a.) PLATINUM | BLACK | RELAY RED | SILVER

suggested retail **\$94.99**
available 10.1.07

Women's sizes: 5–12 R5225
176443 (b.) STEEL | CHARCOAL | PINK SHUBARB | PLATINUM

suggested retail **\$94.99**
available 10.1.07



(a.) Men's



Medial



(b.) Women's

NEW: Replaces Premier Road Plus III GXT

rbkrunning.com

STABILITY

PREMIER CONTROL III

Feature/Benefits: Synthetic | mesh upper | Comfort, fit and durability • 3M Scotchlite® material | Night running safety • Removable PU sockliner | Extraordinary cushioning, accommodates orthotics • PLAYDRY lining | Moisture management • DMX Foam | Cushioning • DMX Shear | Vertical | horizontal cushioning, reduces stress of heel impact • CMEVA midsole | Cushioning • Medial TPU post | Stability • Transition Bridge | Heel-to-toe transition • Blown rubber forefoot | Cushioning, traction and durability • High abrasion rubber outsole | Durability • Width sizing | Custom fit

Men's sizes: 6.5-14, 15 R5775 *suggested retail \$104.99*
160131 (a.) WHITE | BLACK | GOLD RUSH | TYPHOON | METTALIC SILVER *available 2.1.07*
166706 (WIDE) WHITE | BLACK | GOLD RUSH | TYPHOON | METTALIC SILVER *available 2.1.07*

Women's sizes: 5-12 R5775 *suggested retail \$104.99*
160135 (b.) WHITE | BLACK | AIRSTRIP | MET. SILER | TYPHOON | GOLD *available 2.1.07*
166706 (WIDE) WHITE | BLACK | AIRSTRIP | METTALIC | TYPHOON | GOLD *available 2.1.07*



(a.) Men's



Medial



(b.) Women's

CUSHIONING

PREMIER ULTRA KFS

Feature/Benefits: Kinetic fit system | Comfort, support, flexibility in critical areas of the foot • EVA lasting | Enhanced comfort, cushioning • Open weave mesh upper | Breathability and support • 3M Scotchlite® material | Night running safety • Removable sockliner | Accommodates orthotics • PLAYDRY lining | Moisture management • DMX Foam | Cushioning • DMX Shear | Vertical | horizontal cushioning, reduces stress of heel impact • Eclipse™ EVA midsole | Stability and cushioning • Transition Bridge | Heel-to-toe transition • DMPRTEK rubber outsole | Cushioning, traction and durability • Forefoot flex grooves Flexibility

Men's sizes: 6.5-14,15 R5236
167874 (a.) WHITE | NAVY | E.RED | SILVER

suggested retail **\$114.99**
available 4.1.07

Women's sizes: 5-12 R5236
167878 (b.) WHITE | BLUE SCRUBS | SHARK | SILVER

suggested retail **\$114.99**
available 4.1.07



(a.) Men's



Medial



(b.) Women's

CUSHIONING

PREMIER ROAD CUSHION KFS

Feature/Benefits: Kinetic Fit System | Comfort, support, flexibility in critical areas of the foot • Open weave mesh upper | Breathability and support • Full length EVA lasting | Enhanced comfort and added cushioning • 3M Scotchlite® material | Night running safety • Removable EVA sockliner | Accommodates orthotics • PLAYDRY lining | Moisture management • DMX Shear | Vertical | horizontal cushioning, reduces stress of heel impact • Eclipse™ EVA midsole | Stability and cushioning • Transition Bridge | Heel-to-toe transition • DMPRTEK rubber outsole | Cushioning, traction and durability • Forefoot flex grooves | Flexibility • Carbon rubber heel strike | Durable traction

Men's sizes: 6.5–14, 15 R0594suggested retail **\$89.99**

172191 (a.) INDIGO GREY | MET.SILVER | NEPAL RED | WHT

available 10.1.07

172190 (b.) METALLIC SILVER | SHIELD GREY | NORDIC BLUE | WHITE

available 7.1.07

Women's sizes: 5–12 R0594suggested retail **\$89.99**

172194 (b.) MET. SILVER | SHIELD GREY | TULIP | WHT | BLK

available 7.1.07

172193 (c.) WHT | SHIELD GREY | VIOLETTE | BLK

available 7.1.07

**NEW - Replaces Aero Elite**

rbrunning.com



CUSHIONING

HATANA

Feature/Benefits: Open weave mesh upper | Breathability and support • Women's specific collar construction | Performance heel fit, comfort • Full length EVA lasting | Enhance comfort and added cushioning • 3M Scotchlite® material | Night running safety • Removable EVA sockliner | Accommodates orthotics • PLAYDRY lining | Moisture management • DMX Foam – heel and forefoot | Cushioning • Eclipse low profile midsole | Stability and cushioning • Transition Bridge | Heel-to-toe transition • DMPRTEK rubber forefoot | Cushioning, traction, and durability • Additional forefoot flex grooves | Flexibility

Women's sizes: 5-12 R5764

172051 (a.) MET. SILVER | SHIELD GREY | TULIP | BLK

172048 (b.) WHT | MET. SILVER | GREENHEART | SHIELD GREY | BLK

suggested retail **\$84.99**

available 7.1.07

available 10.1.07



(a.) Women's



Medial



(b.) Women's

NEW - Women's only model
specifically engineered and structured for a woman's foot.

rbkrunning.com

CUSHIONING

PREMIER CUSHIONING V

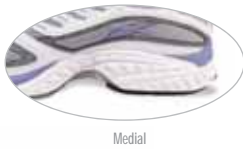
Feature/Benefits: Open weave mesh upper | Breathability and support • Full length EVA lasting
Enhanced comfort and added cushioning • 3M Scotchlite™ material | Night running safety • Removable
EVA sockliner | Accommodates orthotics • PLAYDRY lining | Moisture management • DMX Foam • heel and
forefoot | Cushioning • Transition Bridge | Heel-to-toe transition • DMPRTEK rubber forefoot | Cushioning,
traction, and durability • Forefoot flex grooves | Flexibility

Men's sizes: 6.5-14, 15 R0044 *suggested retail \$79.99*
172021 (a.) WHT | METTALIC SILVER | NEPAL RED | WINTER SKY | BLK *available 7.1.07*

Women's sizes: 5-12 R0044 *suggested retail \$79.99*
172026 (b.) METALLIC SILVER | SHIELD GREY | VIOLETTE | BLACK *available 7.1.07*



(a.) Men's



Medial



(b.) Women's

NEW - Update to Cushioning IV

rbkrunning.com

LIGHTWEIGHT

PREMIER 3D TRAINER

Feature/Benefits: Open weave mesh upper | Breathability and support • 3M Scotchlite® material | Night running safety • PLAYDRY lining | Moisture management • DMX Foam • Exposed | Cushioning • Transition Bridge | Heel-to-toe transition • Forefoot flex grooves | Flexibility • Carbon rubber heel strike Durable traction

Men's sizes: 6.5-14, 15 R5764
172987 (a.) STEEL | INDIGO GREY | NEPAL RED | WINTER SKY

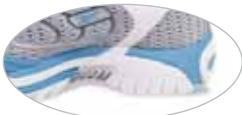
suggested retail **\$84.99**
available 7.1.07

Women's sizes: 5-12 R5764
172991 (b.) STEEL | SILVER | CAROLINA BLUE | WHITE

suggested retail **\$84.99**
available 7.1.07



(a.) Men's



Medial



(b.) Women's

TRAIL

MINOCQUA TR

Feature/Benefits: Synthetic | mesh upper | Comfort, fit and durability • Full length EVA lasting | Enhanced comfort and added cushioning • 3M Scotchlite® material | Night running safety • PLAYDRY lining | Moisture management • DMX Foam | Cushioning • Eclipse™ EVA midsole | Stability and cushioning • Proflexion | Forefoot protection and stability • Transition Bridge | Heel-to-toe transition • Forefoot flex grooves | Flexibility • Carbon rubber heel strike | Durable traction • Premier grip rubber outsole lugs Multi-surface traction

Men's sizes: 6.5–14, 15 R0594

172036 (a.) BLACK | SHIELD GREY | WHITE | CHARCOAL | SAFFRON

suggested retail **\$89.99**

available 8.1.07

Women's sizes: 5–12 R0594

172043 (b.) TROUT GREY | PLATINUM | CHARCOAL | C.BLUE | MET. SILV

suggested retail **\$89.99**

available 8.1.07



(a.) Men's



Medial

(b.) Women's

NEW - Replaces Switchback TR

rbkrunning.com

CUSTOM FIT

PREMIER PUMP PARIS TRAINER

Feature/Benefits: Open weave mesh upper | Breathability and support • Pump technology Customized fit, support and comfort • EVA lasting | Enhanced comfort and added cushioning • 3M Scotch-lite® material | Night running safety • Removable sockliner | Accommodates orthotics • PLAYDRY lining Moisture management • DMX Foam | Cushioning • CMEVA midsole | Cushioning • DMPRTEK rubber outsole Cushioning, traction and durability • Transition Bridge | Heel-to-toe transition • Dual density medial post added stability

Men's sizes: 6.5-14,15 R0055
172988 (a.) WHITE | INDIGO GREY | NEPAL RED | WINTER SKY

suggested retail **\$99.99**
available 7.1.07

Women's sizes: 5-12 R0055
172990 (b.) STEEL | SILVER | PINK RHUBARB | BLACK

suggested retail **\$99.99**
available 7.1.07



(a.) Men's



Medial



(b.) Women's

COMPETITION

PREMIER PARIS RACER

Feature/Benefits: 3D Ultralite | Lightweight, natural footstrike • Synthetic | mesh upper
Comfort, fit and durability • CMEVA midsole | Stability and cushioning • Transition Bridge | Heel-to-toe
transition • Carbon rubber heel strike | Durable traction

Unisex sizes: 4-12,13,14,15 R5764 *suggested retail \$84.99*
173996 WHITE | SILVER | EASTERN RED | TEAM DARK ROYAL | BLACK *available 7.1.07*



COMPETITION

VELOCITY XC SPIKE

Feature/Benefits: Synthetic | mesh upper | Comfort and breathability • IMEVA midsole Cushioning and support • High abrasion, multi-directional lug outsole | Durability and traction • Replaceable spikes | Extra traction

Unisex sizes: 4-12,13,14,15 R0572
172978 (a.) BLACK | SILVER

suggested retail **\$49.99**
available 7.1.07

Women's sizes: 5-12 R0572
158820 (b.) STEEL | CHIFFON | CRANBERRY | SILVER | BLACK

suggested retail **\$49.99**
available 7.1.06



(a.) Unisex



(b.) Women's

COMPETITION

VELOCITY WAFFLE

Feature/Benefits: Synthetic | mesh upper | Comfort and breathability • IMEVA midsole Cushioning and support • High abrasion, multi-directional lug outsole | Durability and traction • Rubber "spikeless" spikes | Traction

UNISEX sizes: 4-12, 13, 14, 15 R5742
172977 (a.) BLACK | SILVER

suggested retail **\$44.99**
available 7.1.07

Women's sizes: 5-12 R5742
158819 (b.) STEEL | CHIFFON | CRANBERRY | SILVER | BLACK

suggested retail **\$44.99**
available 7.1.06



(a.) Unisex



(b.) Women's

MENS APPAREL

PREMIER SHIELD JACKET

Feature/Benefits: PlayShield Polyester with Breathable Stretch Membrane, Seam-Sealed Construction, Locking Full Zip Entry, Hook & Loop Cuffs, MP3 Chest Storage, 360 Degree Reflectivity, Dual Locking front Pockets w | internal bungee system, Reflective RBK & Vector logo treatments, Premier Running Collection Mark.

Sizes: S-M-L-XL-XXL R0005
ARMR7033 005 BLACK

suggested retail **\$100.00**
available 7.1.07

**PREMIER 1/2 ZIP**

Feature/Benefits: PlayDRY Stretch Fabrication, 1 | 2 Zip Neck Entry w | garage, External Storage 360 Degree Reflectivity, Reflective RBK & Vector logo treatments.

Sizes: S-M-L-XL-XXL R0573
ARMR7034 (a.) 998 WINTER SKY | INDIGO GREY
ARMR7034 (b.) 627 NEPAL RED | WHITE

suggested retail **\$75.00**
available 7.1.07
available 7.1.07



MENS APPAREL

VERSATEC JACKET

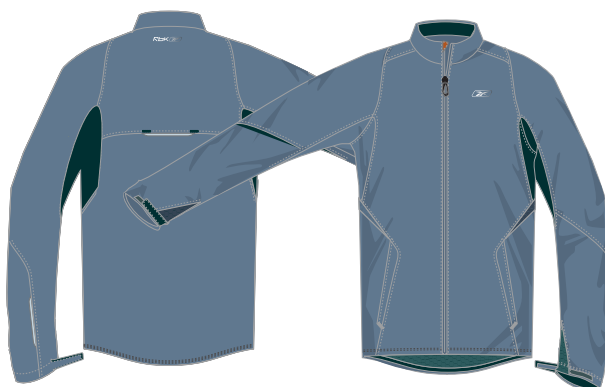
Feature/Benefits: Water Resistant RipStop Microfiber Shell w | Mesh Lining, Zip Locking Entry w | garage, 360 Degree Reflectivity, Dual front zip pockets, Internal bungee system, Side Panel Venting, Hook and Loop cuffs, Reflective RBK & Vector logo treatments.

Sizes: S-M-L-XL-XXL R0003

ARMR7045 482 INDIGO GREY | WINTER SKY

suggested retail **\$60.00**

available 7.1.07

**VERSATEC TRACK PANT**

Feature/Benefits: PlayDRY Stretch Fabrication, Locking Zip Back Pocket, 10" Locking Zip Cuffs, 360 Degree Reflectivity, Reflective RBK & Vector logo treatments, Sample Inseam 31".

Sizes: S-M-L-XL-XXL R0052

ARMR7050 005 BLACK

suggested retail **\$50.00**

available 7.1.07



MENS APPAREL

VERSATEC LS TECH TOP

Feature/Benefits: PlayDRY Stretch Fabrication w | Mesh Inserts, Reflective Graphic, Finished Droptail Taped Hem & Cuffs, Reflective RBK & Vector logo treatments.

Sizes: S-M-L-XL-XXL R0081

ARMR7047 (a.) 100 WHITE | NEPAL RED

ARMR7047 (b.) 998 WINTER SKY | INDIGO GREY

suggested retail **\$36.00**

available 7.1.07

available 7.1.07

**VERSATEC TRAINING SHORT**

Feature/Benefits: Water Resistant RipStop Microfiber Shell w | Mesh Inserts & PlayDry Anti-Microbial Liner, External Locking Storage & Internal Key Pocket, Drawstring elasticized waistband, Reflective RBK & Vector logo, Inseam 5".

Sizes: S-M-L-XL-XXL R0041

ARMR7055 (a.) 005 BLACK | BLACK

ARMR7055 (b.) 998 WINTER SKY | INDIGO GREY

suggested retail **\$28.00**

available 7.1.07

available 7.1.07



MENS APPAREL

VERSATEC SS TECH TOP

Feature/Benefits: PlayDRY Stretch Fabrication w | Mesh Inserts, Reflective Graphic, Finished Droptail Taped Hem & Cuffs, Reflective RBK & Vector logo treatments.

Sizes: S-M-L-XL-XXL RO061

ARMR7048 (a.) 100 WHITE | WINTER SKY

ARMR7048 (b.) 627 NEPAL RED | WHITE

ARMR7048 (c.) 998 WINTER SKY | INDIGO GREY

suggested retail **\$32.00**

available 7.1.07

available 7.1.07

available 7.1.07

**ROAD PLUS LONG TRAINING SHORT**

Feature/Benefits: Water Resistant RipStop Microfiber Shell w | Mesh Inserts & PlayDry Anti-Microbial Liner, External Locking Storage & Internal Key Pocket, Drawstring elasticized waistband, Reflective Vector Heat Transfer Logo treatment, Inseam 7"

Sizes: S-M-L-XL-XXL RO041

ARMR7022 (a.) 005 BLACK | BLACK

ARMR7022 (b.) 999 WINTER SKY

suggested retail **\$28.00**

available 7.1.07

available 7.1.07



MENS APPAREL

VERSATEC SINGLET

Feature/Benefits: PlayDRY Stretch Fabrication w | Mesh Inserts, Reflective Graphic, Finished Droptail Taped Hem, Reflective RBK & Vector logo treatments.

Sizes: S-M-L-XL-XXL R0031
ARMR7049 102 WHITE | BLACK

suggested retail **\$26.00**
available 7.1.07



PREMIER SPLIT SHORT

Feature/Benefits: Stretch Shell Fabrication, PlayDry Anti-microbial Crepe Liner, Mesh Side Panel Inserts, Elasticized Drawstring Waist, Reflective RBK & Vector logo treatments, Premier Running Collection Mark, Inseam : 2".

Sizes: S-M-L-XL-XXL R0071
ARMR7040 (a.) 998 WINTER SKY | INDIGO GREY
ARMR7040 (b.) 005 BLACK

suggested retail **\$34.00**
available 7.1.07
available 7.1.07



MENS TRAINING

RUN EASY SS TECH TOP

Feature/Benefits: Combination of Anti-Microbial yarns and Performance Polyesters Drop Tail Design Flat Seam Construction RBK heat transfer logo treatment PLAYDRY

Sizes: S-M-L-XL-XXL R0521

suggested retail **\$25.00**

Contact your Reebok running specialty sales representative for detailed ordering information.



RUN
WITHIN
YOURSELF.
RUN EASY.

Reebok

RUN
WITHIN
YOURSELF.
RUN EASY.

Reebok

A 10-MINUTE
MILE IS JUST
AS FAR AS A
6-MINUTE MILE.
RUN EASY.

Reebok

YOU COVER
MORE GROUND
IF YOU
TAKE IT SLOW
RUN EASY.

Reebok

YOU COVER
MORE GROUND
IF YOU
TAKE IT SLOW
RUN EASY.

Reebok

RUN EASY LS TECH TOP

Feature/Benefits: Combination of Anti-Microbial yarns and Performance Polyesters Drop Tail Design Flat Seam Construction RBK heat transfer logo treatment PLAYDRY

Sizes: S-M-L-XL-XXL R0041

suggested retail **\$28.00**

Contact your Reebok running specialty sales representative for detailed ordering information.



WOMENS APPAREL

ROAD PLUS JACKET

Feature/Benefits: Water and wind resistancy, comfort and a lot of value. Constructed of a soft nylon dobby fabrication as well as a polyester interlock built in under arms for breathability, 360 reflectivity, mesh lined, hand warmer pockets, key clip as well as bungee system built into jacket, back venting for breathability, interior shuffle | lipstick pocket, 100% Nylon Dobby.

Sizes: **S-M-L-XL** R0523
ARMR7042 956 FENNEL | BLACK

suggested retail **\$65.00**
available 10.1.07

**ROAD PLUS TIGHT**

Feature/Benefits: Constructed with breathability in mind, meshing built in all of the right places including the back of the knee and up at the back of the waist, back pocket storage with locking zipper, drawcord, reflective piping at side of calf, 88 | 12 poly | spandex, PLAYDRY.

Sizes: **XS-S-M-L-XL** R0052
ARWR7053 005 BLACK | BLACK

suggested retail **\$50.00**
available 7.1.07



WOMENS APPAREL

ROAD PLUS TECH 1/2 ZIP

Feature/Benefits: Perfect for layering on cooler days, made with a stretchy polyester spandex fabrication, 1 | 2 zip in front, meshing built-in through the back for breathability, colorblocking, 88 | 12 poly | spandex PLAYDRY.

Sizes: XS-S-M-L-XL R0052

ARWR7046 (a.) 006 BLACK | TULIP

ARWR7046 (b.) 956 FENNEL | BLACK

suggested retail **\$50.00**

available 7.1.07

available 10.1.07

**ROAD PLUS KNICKER**

Feature/Benefits: Constructed with breathability in mind, meshing built in all of the right places including the back of the knee and up at the back of the waist, back pocket storage with locking zipper, drawcord, reflective piping at side of calf, 88 | 12 poly | spandex, PLAYDRY.

Sizes: XS-S-M-L-XL R0002

ARWR7051 005 BLACK

suggested retail **\$40.00**

available 7.1.07



WOMENS APPAREL

ROAD PLUS SHORT-SLEEVE TECH TOP

Feature/Benefits: Body-mapped for breathability, lightweight, constructed with flatlock stitching used on side seams for reduced chaffing, novelty stitching for color pop at bottom hem and shoulders, flattering neck line for a feminine detail, 100% polyester engineer body map mesh, PLAYDRY.

Sizes: S-M-L-XL RO051

ARWR7045 (a.) 002 BLACK | WHITE

ARWR7045 (b.) 102 WHITE | BLACK

ARWR7045 (c.) 683 TULIP | WHITE

ARWR7045 (d.) 956 FENNEL | BLACK

suggested retail \$30.00

available 7.1.07

available 7.1.07

available 7.1.07

available 10.1.07



PREMIER TRAINING SHORT

Feature/Benefits: 100% Polyester woven heat embossed mechanical stretch, 3.5" inseam.

Sizes: XS-S-M-L-XL RO071

ARWR7041 (a.) 006 BLACK | BLACK

ARWR7041 (b.) 683 TULIP | BLACK

suggested retail \$34.00

available 7.1.07

available 7.1.07



WOMENS APPAREL

ROAD PLUS SINGLET

Feature/Benefits: Body-mapped for breathability, lightweight, constructed with flatlock stitching used on side seams for reduced chaffing, novelty stitching for color pop at bottom hem and shoulders, flattering neck line for a feminine detail, 100% polyester engineer body map mesh, PLAYDRY.

Sizes: XS-S-M-L-XL RO041
ARWR7044 102 WHITE | BLACK

suggested retail **\$28.00**
available 7.1.07

**PREMIER SPLIT SHORT**

Feature/Benefits: This key silhouette for runners is constructed with a soft stretch woven fabrication, anti-odor liner ergonomically constructed up through waistband for comfort, mesh built-in at sides for breathability, heat debossed fabric detail at sides, drawcord, 2" inseam, 100% poly mechanical stretch woven, PLAYDRY.

Sizes: XS-S-M-L-XL RO031
ARWR7040 005 BLACK | BLACK

suggested retail **\$26.00**
available 7.1.07



WOMENS APPAREL

RUN LIKE A GIRL TEE

Feature/Benefits: Perfect for layering on cooler days, made with a stretchy polyester spandex fabrication, 1 | 2 zip in front, meshing built-in through the back for breathability, colorblocking, 88 | 12 poly | spandex PLAYDRY.

Sizes: XS-S-M-L-XL R0521

ARWR6047 (a.) 683 TULIP | BLACK

ARWR6047 (b.) 956 FENNEL | BLACK

suggested retail **\$25.00**

available 7.1.07

available 10.1.07



(a.)



(b.)

ROAD PLUS V-NOTCH SHORT

Feature/Benefits: Versatile short constructed out of a soft nylon dobby fabrication, 4" inseam, back pocket storage, colorblocking, drawcord, 100% nylon dobby.

Sizes: XS-S-M-L-XL R0031

ARWR7049 (a.) 005 BLACK | BLACK

ARWR7049 (b.) 683 TULIP | BLACK

ARWR7049 (c.) 956 FENNEL | BLACK

suggested retail **\$26.00**

available 7.1.07

available 7.1.07

available 10.1.07



(a.)



(b.)



(c.)



WOMENS APPAREL

ROAD PLUS SHORT BRA-TOP

Feature/Benefits: Flattering colorblocking details, constructed with 3 fabrications including a power mesh built in all of the right places for extra support, ergonomic cut lines to cut-out back shoulder blades, 88 | 12 poly | spandex PLAYDRY 88% Polyester | 12% Spandex.

Sizes: XS-S-M-L-XL RO041

ARWR7047 (a.) 005 BLACK | BLACK

ARWR7047 (b.) 683 TULIP | BLACK

ARWR7047 (c.) 956 FENNEL | BLACK

suggested retail **\$28.00**

available 7.1.07

available 7.1.07

available 10.1.07

**ROAD PLUS ACTION TANK**

Feature/Benefits: Flattering colorblocking details, constructed with 3 fabrications including a power mesh built in all of the right places for extra support, ergonomic cut lines to cut-out back shoulder blades, 88 | 12 poly | spandex PLAYDRY 88% Polyester | 12% Spandex.

Sizes: XS-S-M-L-XL RO002

ARWR7048 (a.) 005 BLACK | BLACK

ARWR7048 (b.) 683 TULIP | BLACK

ARWR7048 (c.) 956 FENNEL | BLACK

suggested retail **\$40.00**

available 7.1.07

available 7.1.07

available 10.1.07



WOMENS TRAINING

PLAYDRY S | S INTERLOCK

Feature/Benefits: The ultimate short sleeve layering top with wicking, PLAYDRY capabilities keep you cool and dry. Buttery feel against the skin, dual fabrications with textured interlock blocked in, shaped body for feminine fit, contrast colorblocking, 100% polyester, PLAYDRY.

Sizes: XS-S-M-L-XL R0521

ARWP7097 (a.) 102 WHITE | BLACK

ARWP7097 (b.) 683 TULIP | BLACK

ARWP7097 002 BLACK | WHITE

ARWP7097 956 FENNEL | BLACK

suggested retail \$25.00

available 7.1.07

available 7.1.07

available 10.1.07

available 10.1.07



PLAYDRY S | L INTERLOCK

Feature/Benefits: This sleeveless top is perfect for indoor activities or for outside cardio. Featuring PLAYDRY technology, soft hand with a feminine shape. textured interlock blocked in, contrast piping and colorblocking details, 100% polyester, PLAYDRY.

Sizes: XS-S-M-L-XL R0011

ARWP7098 (a.) 006 BLACK | TULIP

ARWP7098 (b.) 102 WHITE | BLACK

suggested retail \$22.00

available 7.1.07

available 7.1.07



WOMENS TRAINING

PLAYDRY L | S TRAINING TOP

Feature/Benefits: Great to wear alone or layered this piece has many uses. Feminine cut lines, PLAYDRY technology, textured mesh built in under the arms for breathability, soft buttery hand, contrast piping and colorblocking detail, 100% polyester PLAYDRY.

Sizes: XS-S-M-L-XL RO041

ARWP7099 (a.) 002 BLACK | BLACK

ARWP7099 (b.) 683 TULIP | BLACK

ARWP7099 (c.) 956 FENNEL | BLACK

suggested retail **\$28.00**

available 7.1.07

available 7.1.07

available 10.1.07



WOMENS TRAINING

RUN EASY SS TECH TOP WOMENS

Feature/Benefits: Combination of Anti-Microbial yarns and Performance Polyesters Drop Tail Design Flat Seam Construction RBK heat transfer logo treatment PLAYDRY

Sizes: XS-S-M-L-XL R0002

suggested retail **\$20.00**

Contact your Reebok running specialty sales representative for detailed ordering information.



RUN
WITHIN
YOURSELF.
RUN EASY.

Reebok logo

RUN
WITHIN
YOURSELF.
RUN EASY.

Reebok logo

A 10-MINUTE
MILE IS JUST
AS FAR AS A
6-MINUTE MILE.
RUN EASY.

Reebok logo

YOU COVER
MORE GROUND
IF YOU
TAKE IT SLOW
RUN EASY.

Reebok logo

YOU COVER
MORE GROUND
IF YOU
TAKE IT SLOW
RUN EASY.

Reebok logo

RUN EASY LS TECH TOP WOMENS

Feature/Benefits: Combination of Anti-Microbial yarns and Performance Polyesters Drop Tail Design Flat Seam Construction RBK heat transfer logo treatment PLAYDRY

Sizes: XS-S-M-L-XL R0021

suggested retail **\$24.00**

Contact your Reebok running specialty sales representative for detailed ordering information.



rbkrunning.com

30 ◀

ACCESSORIES

VECTOR LIGHTWEIGHT TRAINING CAP

Feature/Benefits: 100% polyester, Play Dry six-panel construction, breathable mini-pique mesh venting, printed Vector reflective logo on visor, tonal reflective sandwich visor, reflective strips on back closure, reflective Premier Running logo, Dry-Zone sweatband, quick adjust hook and loop closure, clear rubber RBK pull tab. Blank front for custom embroidery or screenprinting.

Sizes: OSFA R0001

ARUX7051 (a.) 005 BLACK | BLACK

ARUX7051 (b.) 999 WINTER SKY | BLACK

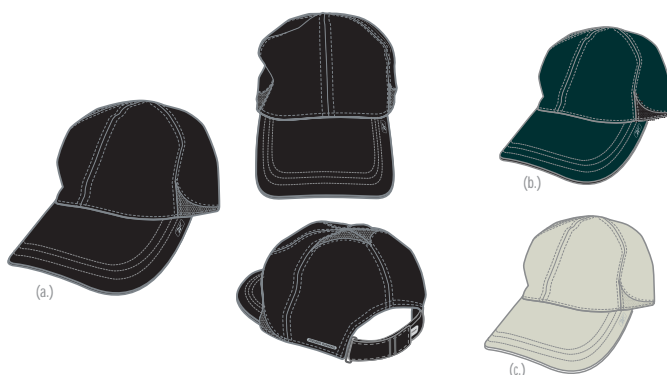
ARUX7051 (c.) 043 TROUT GREY | TROUT GREY

suggested retail **\$20.00**

available 7.1.07

available 7.1.07

available 10.1.07

**WOMENS VECTOR PIQUE TRAINING CAP**

Feature/Benefits: 100% polyester, Play Dry six-panel construction, breathable mini-pique mesh venting, printed Vector reflective logo on visor, tonal reflective sandwich visor, reflective strips on back closure, reflective Premier Running logo, Dry-Zone sweatband, quick adjust hook and loop closure, clear rubber RBK pull tab.

Sizes: OSFA R0001

ARWX7037 (a.) 005 BLACK | BLACK

ARWX7037 (b.) 106 WHITE | BLACK

ARWX7037 (c.) 683 TULIP | BLACK

suggested retail **\$20.00**

available 7.1.07

available 7.1.07

available 7.1.07



ACCESSORIES

LIGHTWEIGHT KNIT SKULLY

Feature/Benefits: 100% polyester fleece, cold weather running PLAYDRY | Play Warm skull-cap, reflective trim details at center front and back, screen printed Vector logo at front left, reflective Premier Running logo, RBK w | Vector logo at center back.

Sizes: (S/M and L/XL) R0061
ARUX7029 005 BLACK | BLACK

suggested retail **\$16.00**
available 7.1.07

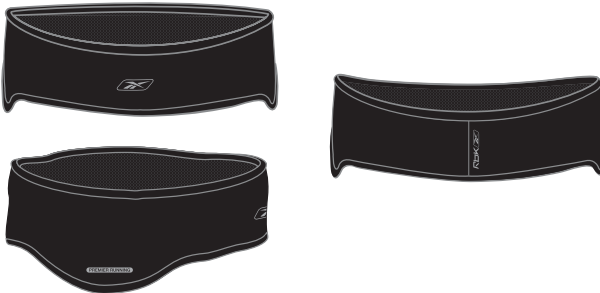


VECTOR PERF EARBAND

Feature/Benefits: 100% polyester fleece, cold weather running PLAYDRY | Play Warm earband, tonal binding, reflective Vector logo at center front, reflective Premier Running logo, reflective RBK w | Vector logo at back.

Sizes: (S/M and L/XL) R006
ARUX7024 005 BLACK | BLACK

suggested retail **\$12.00**
available 7.1.07



ACCESSORIES

VECTOR WINDPROOF WATERPROOF
CONV. MITTEN

Feature/Benefits: 88 | 12 polyester | spandex PLAYDRY | Play Shield | Play Warm 3- in-1 convertible mitten, waterproof and windproof outer mitten shell, mitten opens at the palm and folds back to expose the performance glove inside, internal magnetic closure, external fleece lined thumb for sweat absorption, seperate independent 100% polyester performance fleece running glove, reflective piping on back palm, reflective vector logo, reflective Premier Running logo.

Sizes: (S/M and L/XL) R0003
ARUX7026 005 BLACK | BLACK

suggested retail **\$30.00**
available 7.1.07

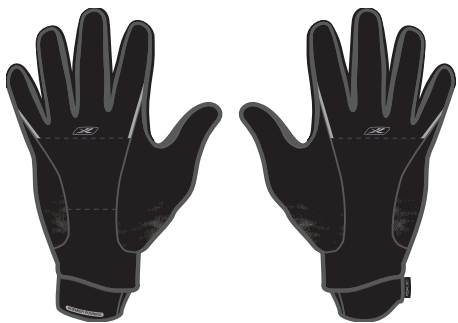


VECTOR PERFORMANCE GLOVE

Feature/Benefits: 100% polyester fleece, cold weather PLAYDRY running glove, pocket on left hand, performance mesh inserts on fingers for added breathability, reflective RBK w | Vector logo and finger detail.

Sizes: (S/M and L/XL) R0009
ARUX7050 005 BLACK | BLACK

suggested retail **\$18.00**
available 7.1.07



ACCESSORIES

24/7 DRAWCORD W/POCKET CARRYSACK**Feature/Benefits:** 420d checker ripstop, 210 nylon, reflective logo, zip pocket.**Sizes:** NA R006
ARUY7003 005 BLACK | BLACK*suggested retail \$11.99*
available 7.1.07**24/7 SMALL DUFFLE****Feature/Benefits:** 420d checker ripstop, 600d polyester, u-shaped zippered main compartment, external zip pocket with internal tunneled wet sack, media compatible internal pocket with headphone port, personal internal zip pocket, reflective print, padded adjustable non-slip detachable shoulder strap, durable molded metal zipper pulls.**Sizes:** S | M, L | XL R0041
ARUY7006 005 BLACK | BLACK*suggested retail \$27.99*
available 7.1.07

ACCESSORIES

FLEX GROOVES LOW CUT

Feature/Benefits: Specially knit flex grooves keep sock in place and provide support; Knit with Polyester/Cotton blend for soft moisture management; Arch Support; Knit with spandex for shape retention & great fit; Zone cushioning in the heel and toe

Sizes: Sock size 9-11

(Fits men's shoe size 6-9 and women's shoe size 4-10)

9234LA (a.) 110 WHITE | GREY

9234LA (b.) 005 BLACK | GREY

suggested retail **\$10.00**

available 7.1.07

available 7.1.07

Sizes: Sock size 10-13

(Fits men's shoe size 8-12 and women's shoe size 10-13)

9236LM (a.) 110 WHITE | GREY

9236LM (b.) 005 BLACK | GREY

suggested retail **\$10.00**

available 7.1.07

available 7.1.07



(a.)



(b.)

FLEX GROOVES LOW QUARTER

Feature/ Benefits: Specially knit flex grooves keep sock in place and provide support; Knit with Polyester/Cotton blend for soft moisture management; Arch Support; Knit with spandex for shape retention & great fit; Zone cushioning in the heel and toe

Sizes: Sock size 9-11

(Fits men's shoe size 6-9 and women's shoe size 4-10)

9235QA (a.) 110 WHITE | GREY

9235QA (b.) 005 BLACK | GREY

suggested retail **\$10.00**

available 7.1.07

available 7.1.07

Sizes: Sock size 10-13

(Fits men's shoe size 8-12 and women's shoe size 10-13)

9237QM (a.) 110 WHITE | GREY

9237QM (b.) 005 BLACK | GREY

suggested retail **\$10.00**

available 7.1.07

available 7.1.07



(a.)



(b.)

TERMS AND CONDITIONS

ANY OFFER TO SELL BY REEBOK AS WELL AS ANY ACCEPTANCE BY REEBOK OF A PURCHASER'S ORDER IS EXPRESSLY MADE CONDITIONAL UPON PURCHASER'S ASSENT TO REEBOK'S AUTHORIZED RETAIL DEALER AGREEMENT AND TO THESE TERMS AND CONDITIONS OF SALE AND NO OTHERS. PURCHASER'S TAKING DELIVERY OF ANY PRODUCT OR PAYMENT OF ANY INVOICE SHALL BE CONCLUSIVE EVIDENCE OF SUCH ASSENT.

ORDERS: All orders are subject to acceptance by an authorized official of Reebok at Reebok's Corporate Headquarters Office in Canton, Massachusetts. Acceptance by Reebok of an order shall be deemed to occur only upon the tendering of delivery of the products that are the subject of such order to the carrier for delivery to Purchaser. Acceptance by Reebok is limited to the terms stated herein and in the Reebok Authorized Retail Dealer Agreement. Such terms and conditions shall control irrespective of any inconsistent, different or additional terms and conditions, whether printed or otherwise, set forth in any communication from Purchaser to Reebok, including without limitation in any Purchaser purchase order, confirmation, routing guide or manual revision and Reebok hereby rejects any such inconsistent, different or additional terms or conditions unless otherwise specifically agreed to in writing by Reebok. Without limiting the foregoing, Reebok further rejects terms and conditions inconsistent with, different from or additional to those contained herein which are contained on any website of Purchaser for which access is conditioned on acceptance of such terms and conditions. A functional acknowledgement sent on receipt of an electronic order does not constitute acceptance of electronic data interchange orders (see the Reebok Electronic Data Interchange Trading Partner Agreement for further detail).

MINIMUM ORDER SIZE: Orders will not be accepted for a "mark for" | packing level of less than six (6) units.

PRICES: No employee, Reebok sales representative or any other party other than an officer of Reebok is authorized to alter Reebok's pricing and other terms and conditions of sale. All prices are subject to change without notice. Orders will be billed at prices prevailing at the time of order as reflected on Reebok's then current price list. Reebok will not recognize any terms outside of its standard programs except as specifically agreed in writing by Reebok. The amount reflected in a Reebok invoice will be deemed accepted and binding upon Purchaser unless Purchaser notifies Reebok in writing of a dispute within thirty (30) days of the date of the invoice.

PAYMENT TERMS: Unless otherwise stated on the invoice, terms of payment shall be net thirty (30) days from the invoice date. Purchaser shall not set off against or deduct from any amounts due to Reebok hereunder all or any part of any amounts owed or alleged to be owed by Reebok to Purchaser. Chargebacks will not be accepted by Reebok unless agreed to in writing between Reebok and Purchaser. A service charge of 1 | 2% per month will be charged on all past due invoices plus costs of collection (including attorneys' fees). This is an annual percentage rate of 18%. There are no discounts to customers having an overdue balance. Each order placed by Purchaser and accepted by Reebok shall be considered an independent transaction, and payment therefore shall be due accordingly. If Reebok, in its sole discretion, at any time is unsatisfied with Purchaser's financial responsibility, or feels it needs further assurance that Purchaser will pay for outstanding orders, Reebok shall be entitled to require Purchaser to pay for its orders on a cash-in-advance basis. If Purchaser is in default under any agreement with Reebok, or fails to comply with any written rule or policy of Reebok, Reebok shall have the right, without prejudice to any other legal remedy, of canceling all outstanding orders. Until payment of all obligations of Purchaser to Reebok is received in full, Reebok shall retain a security interest in the goods covered by this order and the proceeds thereof, with Purchaser agreeing to execute all documents which may be necessary or appropriate to protect and perfect Reebok's security interest therein. Reebok shall have the right to set off and deduct any amounts due to Reebok from Purchaser against and from any amounts owed or allegedly owed by Reebok to Purchaser.

AUDIT CLAIMS: Reebok invoices will not be subject to any audit claim by Purchaser unless Purchaser notifies Reebok within thirty (30) days after the date such invoice is due.

DELIVERY: All warehouse orders are shipped F.O.B. shipping point (Reebok loading dock). Container dropship orders are shipped F.O.B. point of entry or as otherwise agreed between the parties. All container

dropship Purchasers assume ownership of goods upon notification to Purchaser's designated carrier of availability of the container for pickup (by facsimile delivery of the delivery order therefor, telephone notification or such other method as is customary for presentation) within the delivery window set forth in Reebok's Trading Partner Guidelines from time to time (or such other guidelines as Reebok may issue) required to meet the "in-store" or other delivery date indicated on the purchase order, or as otherwise agreed between the parties. Unless otherwise directed by Purchaser, Reebok will use the carrier designated by Purchaser. Purchaser is responsible for all payments due to the carrier. Purchaser assumes all risk of loss upon delivery of products by Reebok to Purchaser's carrier in the case of warehouse orders and to the bailee in the case of container orders. Reebok is under no obligation to insure shipments unless specifically requested by Purchaser and then only at Purchaser's expense and valuation.

Reebok reserves the right to make shipments in installments within the delivery window indicated on the purchase order. Reebok will attempt to meet delivery schedules requested by Purchaser. However, all delivery indications are estimates only. In no event will Reebok assume any liability, consequential or otherwise, as a result of Reebok's failure to deliver product in accordance with indicated delivery schedules. Delivery of part of an order does not obligate Reebok to make further deliveries, and partial deliveries will be billed when made.

CHANGES IN ORDERS: Changes in orders will be considered only (i) within thirty (30) days of order submission in the case of container orders, or (ii) no later than forty-five (45) days prior to the first shipment date indicated on the order in the case of warehouse orders.

ORDER TERMINATION BY PURCHASER: Warehouse orders may be cancelled by the Purchaser only upon written authorization from Reebok's Corporate Headquarters Office in Canton, Massachusetts and only will be considered if requested no later than forty-five (45) days prior to the first shipment date indicated on the applicable order. Container orders may not be cancelled. Any exceptions to the foregoing order termination policy with respect to container orders may only be made with the written approval of a Reebok Sales Vice President. Cancellations exceeding 10% of any monthly futures bookings will result in loss of discount. Special make-up orders and custom product orders are not cancellable under any circumstance.

NO TRANSSHIPMENTS: Reebok sells only directly to selected retail outlets for resale by them only to end users at approved physical retail locations. Proposed sale at any new retail outlet requires advance written approval from an authorized Reebok official of Reebok's Corporate Headquarters Office in Canton, Massachusetts. Resale or transshipment of merchandise to an unauthorized location or to another business is expressly prohibited, violates the terms and conditions of sale and may result in cancellation of existing orders and | or termination of Purchaser's business relationship with Reebok. It is understood and agreed that said prohibition of transshipment includes without limitation sales via the Internet or other media, fulfillment of sales originating from electronic media, as well as sales through mail, direct order or catalogues, unless expressly authorized in writing through a separate contractual agreement with Reebok. Purchaser will not purchase Reebok products from any source other than Reebok.

CHANGE IN OWNERSHIP: In the event of a sale of or a partial or total change in ownership in Purchaser or any of Purchaser's approved retail outlets, the new owner(s) must apply to Reebok for approval as an authorized dealer and Purchaser will not be eligible to obtain Reebok merchandise until the application is approved in writing by Reebok's Corporate Headquarters Office in Canton, Massachusetts.

Representative Amount of the Line: Reebok sells only to retail outlets which carry a representative amount of the line as deemed appropriate by Reebok in light of the type of retail outlet, the status of Reebok's line or lines of merchandise, and marketing conditions. Failure of a retailer to do so contravenes the terms and conditions of sale and may result in cancellation of existing orders and | or termination of Purchaser's business relationship with Reebok.

DISTRIBUTION CHANNELS: Reebok reserves the right to limit the distribution of some product lines or segments to certain selected distribution channels.

TERMS AND CONDITIONS

DESIGN CHANGES: Reebok reserves the right to discontinue product lines and to make changes offered in products at any time.

ALLOCATIONS: Acceptance of orders and shipments are subject to allocation by Reebok in times of product shortages in response to factors deemed most appropriate by Reebok at the time.

MERCHANDISING OF PRODUCTS: Purchaser agrees to (a) provide prompt, courteous service to its Reebok consumers using personnel trained in the selling and servicing of athletic products and Reebok products in particular; and (b) merchandise Reebok products consistent with guidelines established by Reebok including with respect to the in-store display of Reebok products.

SHORTAGES: All claims for lost or damaged shipments (a) with respect to warehouse orders, must be made directly to the delivering carrier, and (b) with respect to containers, must be made in accordance with Reebok's claims policy, a copy of which is available on request. Shortages due to packing errors must be reported to Purchaser's Reebok Account Service Representative in Canton, Massachusetts within fifteen (15) days of receipt in the case of shortage as in cartons and within thirty (30) days of receipt in the case of concealed shortages.

RETURN GOODS POLICY: All returns, including the product assortment and quantity to be included as a return, are subject to pre-authorization by Purchaser's Reebok Account Service Representative at Reebok's Corporate Headquarters Office in Canton, Massachusetts. Defective and return to stock items must be authorized and returned separately. Upon approval by Reebok, a Return Authorization Number and, if requested, Label, which must be clearly affixed to the outside of the carton will be issued to the customer. Purchaser is responsible for freight and handling charges on returns of any product other than authorized defective merchandise. Purchaser must follow Reebok's Returns Guidelines to ship authorized defective returns under Reebok's freight carrier contracts. Freight for defective merchandise that is shipped under the Purchaser's freight contracts is not accepted as a deduction on product invoices and is not accepted for reimbursement. Returns not carrying the Reebok Return Authorization Number will be refused delivery by Reebok and will be returned to the Purchaser. Reebok is not responsible for freight charges resulting from unauthorized returns. Merchandise must be returned in the same salable condition as received. Credit will not be issued for any product items or quantities other than as specifically included in the pre-authorization. All returns must be shipped to Reebok in accordance with Reebok's Routing Guide for return freight. With defective merchandise, the customer's account will be credited at full value. First quality returns will be credited to the customer's account at full value less a fifteen percent (15%) restocking charge. Shipments refused by the Purchaser will be credited at full value if the shipment error is by Reebok. Shipments refused for reasons not attributable to Reebok will be credited at full value less fifteen percent (15%) restocking charge. Reebok reserves the right to assess a charge on return shipments for the removal of any pre-tickling.

CUSTOMER ROUTING AND LOGISTIC REQUIREMENTS: Reebok will not be bound to terms, directives or requirements set forth by Purchaser through Routing and Logistic Guides unless Reebok has agreed in writing to such terms, directives or requirements. In addition, Purchaser may incur charges for value added services (labeling, ticketing, and special packaging). Routing and Logistic Manuals should be directed to the Compliance Department located at Reebok's corporate headquarters office in Canton, Massachusetts.

LIMITED WARRANTY: Reebok warrants that its products, at the time of shipment, are free from defects in workmanship and materials. THE WARRANTY DESCRIBED IN THIS PARAGRAPH SHALL BE IN LIEU OF ANY OTHER WARRANTY, EXPRESS OR IMPLIED, INCLUDING BUT NOT LIMITED TO, ANY IMPLIED WARRANTY OF MERCHANTABILITY OR FITNESS FOR A PARTICULAR PURPOSE. Purchaser's remedies are exclusively limited to replacement of or credit for any defective product (at the option of Reebok) but such replacement or credit shall be made only if the Purchaser follows the terms and conditions set forth herein under the "Return Goods Policy" section.

PRODUCTION STANDARDS: Products covered by any Reebok invoice are produced and furnished in accordance with the Reebok Human Rights Production Standards, a copy of which is available on request made to Reebok.

LIMITATION OF LIABILITY: REEBOK ASSUMES NO LIABILITY EXCEPT AS EXPRESSLY PROVIDED IN THESE TERMS AND CONDITIONS AND IN NO EVENT WILL REEBOK BE LIABLE FOR LOSS OF PROFITS, INTERRUPTION OF BUSINESS OR ANY OTHER SPECIAL INDIRECT, INCIDENTAL, OR CONSEQUENTIAL DAMAGES, WHETHER ARISING IN CONTRACT, IN TORT, UNDER WARRANTY OR OTHERWISE.

FORCE MAJEURE: If a delivery date is specified, that date will be extended to the extent that delivery is delayed by reason of fire, flood, war, riot, strike, natural disaster, or any other event beyond Reebok's reasonable control and if, as a result of such a delay, the goods ordered are unavailable, Reebok may substitute comparable goods.

GENERAL: This contract shall be construed and enforced in accordance with the laws of Massachusetts. The Massachusetts courts (state and federal) will have exclusive jurisdiction of any controversy between Purchaser and Reebok, and no court action may be brought by either party against the other outside of Massachusetts. Both Reebok and Purchaser waive their right to jury trial in any controversy or court action between them. Any action for breach of contract must be commenced within one (1) year from the date of the delivery of the goods. Purchaser's rights under this contract may not be assigned, transferred, or sold by Purchaser without the prior written consent of Reebok, and such assignment will be void. Reebok may assign this contract only to a parent, subsidiary, or affiliated firm, or to another entity in connection with the merger, sale or transfer of all or substantially all of its business. Subject to these restrictions, the provisions of the contract shall be binding upon and inure to the benefit of the parties, their successors, and permitted assigns. Terms and conditions are subject to change by Reebok without prior notice. The Reebok Authorized Retail Dealer Agreement and these terms and conditions of sale constitute the entire agreement between the parties with respect to the subject matter hereof and supercede all previous agreements or understandings between the parties with respect thereto. No additions to, deletion from, or modification of any of the provisions herein shall be binding upon Reebok unless made in writing and signed by a duly authorized representative of Reebok, the terms and conditions herein being final, complete and exclusive statement of terms of agreement between Reebok and Purchaser.

Reebok International Ltd.
1895 J.W. Foster Boulevard
Canton, MA 02021
781.401.5000
Reebok Customer Service
888.405.8326
www.rbkrunning.com.

SIZE CHARTS MEN

	S	M	L	XL	XXL
CHEST	35-37	38-40	41-44	45-48	49-55
WAIST	29-31	32-34	35-38	39-41	42-45
HIP	36-38	39-41	41-44	45-49	50-54
INSEAM	30	31	32	33	33

WOMEN

	XS	S	M	L	XL
SIZE	4	6	8 10	12 14	16
CHEST	30-32	33-34	35-37	38-40	42-45
WAIST	21-23	24-25	26-28	29-31	32-34
HIP	31-33	34-35	36-38	39-41	42-45
INSEAM	29	30	31	32	33

ESTIMATED BODY SIZE RANGES.
NOT ACTUAL GARMENT MEASUREMENTS.

©2007 Reebok. All Right Reserved. REEBOK, RBK, VECTOR , DMX and PLAYDRY are registered trademarks of Reebok. Scotchlite is a registered trademark of Minnesota Mining and Manufacturing Co. LYCRA is a registered trademark of E.I. DuPont de Nemours Co., Inc.

Photos by Gary Land.

rbkrunning.com

▶ 37

© 2007 Reebok International. All Rights Reserved. REEBOK, RBK and the Vector Logo are registered trademarks of Reebok International.



RBK 

Reebok International
1895 J.W. Foster Blvd. • Canton, MA. 02021

Rbk Customer Service: 888-405-8326

781-401-5000
www.rbkrunning.com